

## **FREEDOM OF INFORMATION ACT 2000**

Your request for information has now been considered and the Council's response to your questions is shown below.

**You asked:**

**Dear Leicester City Council**

- 1. The total number of qualified social workers currently supplied through recruitment agencies, analysed by children's Services and Adult Services.**

Children's Services = 13

Adult & Communities Services = 3

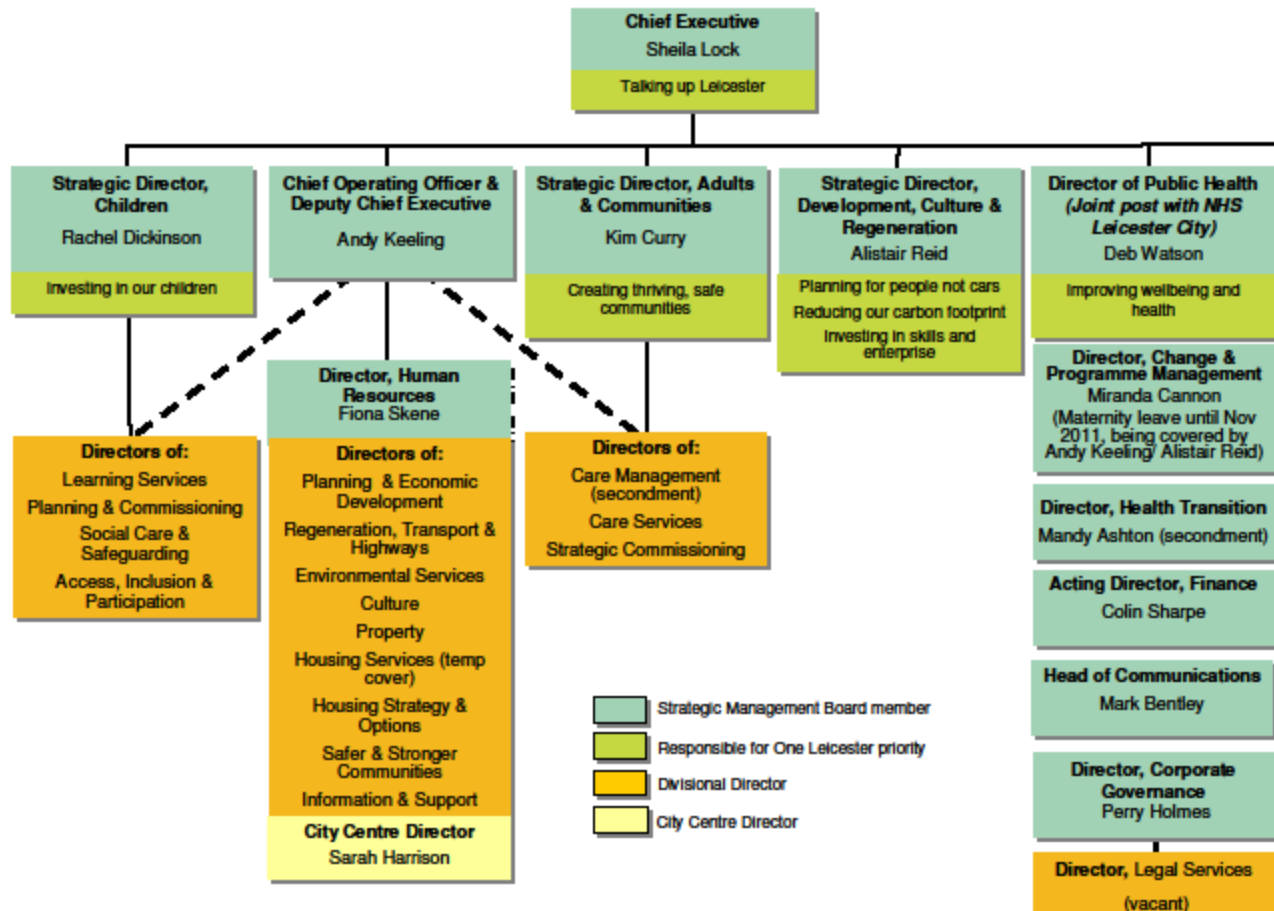
Total Number = 16

- 2. An organogram showing the Social Services Department within the Council"**

Social Services no longer exists as a single department within the Council. The organogram on the following page shows where the Council's social services functions fit within the overall council structure.

The children & young people's Social Care and Safeguarding division reports to the Council's Strategic Director, Children. There are three divisions within the adults social care sector (Care Management, Care Services and Strategic Commissioning), reporting to the Council's Strategic Director, Adults and Communities.

# Leicester City Council Senior Management Structure



As at May 2011

The legislation allows you to use the information supplied for your own personal use. Please be aware that any commercial or other use, for example publication, sale, or redistribution may be a breach of copyright under the Copyright, Designs and Patents Act 1988 as amended unless you obtain the copyright holder's prior permission.

Not all the information that is supplied which is covered by copyright will be the Council's copyright, for example it may be the copyright of a government department or another Council. You should seek either the Council's consent or their consent as appropriate. The Council is willing to advise you of any such potential issues on request. In order to make a request to re-use the information please contact the Head of Information Governance using the details below.

If you are dissatisfied with the handling of your request please write to:

**Head of Information Governance  
Information and Support  
Leicester City Council  
FREEPOST (LE985/33)  
New Walk Centre  
LEICESTER LE1 6ZG  
e-mail: [foia@leicester.gov.uk](mailto:foia@leicester.gov.uk)**

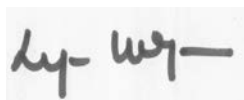
Your request for internal review should be submitted to the above address within 40 (forty) working days of receipt by you of this response. Any such request received after this time will only be considered at the Council's absolute discretion.

You can also complain to the Information Commissioner at:

**Information Commissioner's Office  
Wycliffe House  
Water Lane  
Wilmslow SK9 5AF  
Telephone: 01625 545 700  
[www.informationcommissioner.gov.uk](http://www.informationcommissioner.gov.uk)**

Please be aware that the Information Commissioner does not normally consider appeals or complaints until the internal appeals and complaints processes of the public authority which is answering the request have been exhausted. You are therefore advised to complain or appeal to Head of Information Governance before contacting the Commissioner.

Yours sincerely



**Lynn Wyeth  
Head of Information Governance**