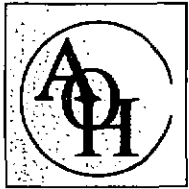


2082



# AOH Ltd

Consultants In Asbestos, Occupational Hygiene, Safety & The Environment  
Registered in England Number 3972469

Registered Office: St. Paul's House, Eldon Street, Willington Quay, Tyne & Wear, NE28 6NQ.  
Tel: 0191 263 5115 - Fax: 0191 263 2758



## TYPE 2 ASBESTOS SURVEY OF

**The Rowans  
College Street  
London Road  
Leicester  
LE2 0JH**

AOH REPORT No: LEC/A1/18308L  
Issue Date: 3<sup>rd</sup> April 2008



Client

Leicester City Council  
Resources, Access & Diversity  
16 New Walk  
Leicester  
LE1 6UB

Surveyors:

B.Sc(Hons)

Analyst:

B.Sc(Hons)M.Sc.



## CONTENTS

### PAGE No.

UKAS ACCREDITATION CERTIFICATES .....	3
INTRODUCTION.....	5
TERMINOLOGY.....	7
ASBESTOS REGISTER.....	15
NO ACCESS REGISTER.....	16
DISCUSSION .....	17
BUILDING SURVEY REPORT SHEETS.....	18
PLANS .....	71
PHOTOGRAPHS.....	72
BULK SAMPLE REPORT .....	73

**UKAS ACCREDITATION CERTIFICATES**

**United Kingdom Accreditation Service**

**ACCREDITATION CERTIFICATE**



**INSPECTION BODY**  
**No. 182**

**AOH Ltd**

is accredited as a Type C body in accordance with the recognised International Standard ISO/IEC 17020:1998  
*General Criteria for the operation of various types of bodies performing inspection.*

This accreditation demonstrates technical competence for a defined scope as detailed in and at the locations  
specified in the schedule to this certificate.

The schedule to this certificate is an essential accreditation document and from time to time may be revised and  
reissued by the United Kingdom Accreditation Service. The most recent issue of the schedule of accreditation,  
which bears the same accreditation number as this certificate, is available from the UKAS website  
[www.ukas.com](http://www.ukas.com).

This accreditation is subject to continuing conformity  
with United Kingdom Accreditation Service requirements. The absence of a schedule on the UKAS website  
indicates that the accreditation is no longer in force.

*R. Belk*

*Accreditation Manager, United Kingdom Accreditation Service*

**Initial Accreditation date**  
**12 February 2002**

**This certificate issued on**  
**12 July 2006**

The Department of Trade and Industry (DTI) has entered into a memorandum of understanding with the United Kingdom Accreditation Service (UKAS) through which UKAS is recognised as the national body responsible for assessing and accrediting the competence of organisations in the fields of calibration, testing, inspection and certification of systems, products and persons

# United Kingdom Accreditation Service

## ACCREDITATION CERTIFICATE



TESTING LABORATORY  
No. 0673

**AOH Ltd**

is accredited in accordance with the recognised International Standard ISO/IEC 17025:2005  
*General Requirements for the competence of testing and calibration laboratories.*

This accreditation demonstrates technical competence for a defined scope as detailed in and at the locations specified in the schedule to this certificate, and the operation of a laboratory quality management system (refer joint ISO-ILAC-IAF Communiqué dated 18 June 2005).

The schedule to this certificate is an essential accreditation document and from time to time may be revised and reissued by the United Kingdom Accreditation Service. The most recent issue of the schedule of accreditation, which bears the same accreditation number as this certificate, is available from the UKAS website [www.ukas.org](http://www.ukas.org).

This accreditation is subject to continuing conformity with United Kingdom Accreditation Service requirements. The absence of a schedule on the UKAS website indicates that the accreditation is no longer in force.

*R. Bellson*

*Accreditation Manager, United Kingdom Accreditation Service*

Initial Accreditation date  
09 August 1989

This certificate issued on  
12 July 2008

The Department of Trade and Industry (DTI) has entered into a memorandum of understanding with the United Kingdom Accreditation Service (UKAS) through which UKAS is recognised as the national body responsible for assessing and accrediting the competence of organisations in the fields of calibration, testing, inspection and certification of systems, products and persons

## INTRODUCTION

A type 2 survey, as agreed with the client, was carried out within the property, The Rowans. The protocol was A.O.H. In-house Method 3, *Surveying for Asbestos in Premises and the Collection of Bulk Samples*, which is based upon, and should be read in conjunction with, MDHS 100 *Surveying, Sampling and Assessment of Asbestos Containing Materials*. Where there are slight differences between the two documents the In-House Method takes precedence.

The objectives are:

1. Identify so far as is reasonably practicable the location (or presumed location) of asbestos containing materials within the premises.
2. Safely sample such materials where required by the client according to the In-House Method.
3. Correctly identify the asbestos type according to the In-House Method.
4. Record the location, extent and product type of any identified or presumed asbestos containing materials.
5. Record the accessibility, condition and vulnerability of identified or presumed asbestos containing materials, using *HSG 227: A Comprehensive Guide to Managing Asbestos in Premises*.
6. Provide a clear and unambiguous report of the findings.

Method 3 may have been modified to comply with the wishes of the client as agreed at contract enquiry stage.

It is the policy of AOH Ltd to report the type of asbestos identified in the material and not the estimated percentage. The reporting of non-asbestiform materials is disclaimed to be outside the scope of UKAS accreditation.

AOH Ltd has a policy not to subcontract UKAS accredited inspection or testing works.

## METHOD

### SCOPE

Three major types of survey are covered by this method although different types of survey can be specified and used depending upon the circumstances and wishes of the client.

The standard survey types are as follows:

- |        |   |
|--------|---|
| Type 1 | Location and Assessment Survey (Presumption)  |
| Type 2 | Standard sampling, identification and assessment survey (Sampling Survey)                   |
| Type 3 | Full access sampling and identification survey (Pre-Demolition/Major Refurbishment Surveys) |

### Type 1

The purpose is to locate, as far as reasonably practicable, any suspect materials in the building and assess the risk. All accessible areas are inspected or presumed to contain asbestos.

### Type 2

The protocol is the same as for type 1 except that representative samples are collected and analysed for the presence of asbestos. Samples from each type of suspect material are collected and analysed to confirm or otherwise the judgement of the Surveyor. Sampling normally takes place at the time of the survey.

### Type 3

The protocol is the same as for type 2 except that it may involve destructive inspection, as necessary, to gain access to all areas including those that may be difficult to reach. A full sampling programme is undertaken to identify asbestos containing materials although the condition need not be assessed, other than noting damage and debris, as the purpose is to provide a basis for tendering the removal of asbestos materials.

## **LIMITATIONS**

In the event that it is not possible to fully examine each individual building structure, certain assumptions may need to be made as to the likely presence of asbestos materials based upon more complete examination of other areas. In addition asbestos may be concealed in walls, behind boxings or under floors etc.

No comments can be made as to the presence of asbestos containing materials in areas where no access was gained.

In the case of refurbishment or demolition, type 3 survey work over and above that carried out during a type 1 or type 2 survey will be required.

## TERMINOLOGY

The terminology used for the building report form is as follows:

1. *Property* The Building is identified by name.
2. *Floor* The floor on which the specific area surveyed is situated
3. *Block* This is a more specific designation of the general area surveyed.
4. *Area Surveyed* Description of an area e.g. Boilerhouse.
5. *Ref = Area code* Each area examined is awarded its own code e.g. Boilerhouse 01. Any constituent of that area therefore is awarded a further reference e.g. Boilerhouse - ceiling may be 01/1.
6. *Description* The precise location within the area surveyed which also may indicate the nature of the material e.g. lagging, cement product, rope, wallboard.
7. *Samp=Sample* This is a specific individual sample number assigned by A.O.H. for traceability of the sample under UKAS accreditation. A number here also notes that a sample was taken. - If the material is presumed to be asbestos a 'P' is entered in this column
8. *Photo Ref:* Photographic reference relevant to the Analysis / Observation.
9. *Analysis / Observation* Result of analysis carried out following sampling.  
Crocidolite = Blue Asbestos  
Amosite = Brown Asbestos  
Chrysotile = White Asbestos  
None detected = No asbestos detected in sample or surveyors observation  
Or the surveyors opinion as to the type of material present i.e. wood, plaster, machine made mineral fibre etc. Reporting of non-asbestiform materials is disclaimed to be outside the scope of UKAS accreditation.
10. *Quant & UOM* An estimated quantity of the amount of asbestos containing material present with the unit of measurement. (tile, boards, sprayed and textured coatings in square metres (M<sup>2</sup>), pipe lagging & rope in Metres (M). Isolated items such as fire blankets in number (nr)
11. *Product Type / Damage / Surface Treatment / Asbestos Type* See material assessment algorithm.
12. *Total Risk Assessment* This is the numerical assessment score, which is the result of adding the material assessment algorithm and the priority assessment algorithm.
13. *AOH Action Priority* This is a subjective rating given by the surveyor regarding the priority for action based on the condition of the asbestos containing material and its vulnerability. This is outside the scope of UKAS accreditation.  
LOW = Material in good condition and not easily accessible.  
Asbestos fibre release negligible  
MED = Material generally in good condition. Slight damage or greater vulnerability. Risk to health minimal unless further deterioration occurs. Must be regularly inspected  
HIGH = Immediate action required either abatement or removal
14. *Future Action / Comments* Any relevant information regarding the condition accessibility etc. of the material. In addition relevant comments may be included in this section.
15. *Notes* Any additional information, which is felt, may be of relevance.
16. *Surveyor* The name/initials of the Surveyor/s carrying out the survey.
17. *Date* The date of the inspection

## ASBESTOS REGISTER

This is a summary of all asbestos materials found or presumed during the survey

## MATERIAL ASSESSMENT ALGORITHM

### Assessment and Prioritisation

The four main parameters determining fibre release are:

Product type  
 Damage / Deterioration  
 Surface Treatment  
 Asbestos Type

Each parameter is scored as

HIGH = 3  
 MEDIUM = 2  
 LOW = 1

Other categories may allow a zero entry

#### 1. PRODUCT TYPE

<u>HIGH = 3</u>	<u>MEDIUM = 2</u>	<u>LOW = 1</u>
Lagging (Pipes and Boilers) Spray Coats Loose Asbestos Mattresses or Packing	Asbestos Insulating Board Mill Board Low Density Boards Loose Textiles, Soft Gaskets or ropes Soft Papers and Felts	Asbestos Cement Composites Plastics Resins Mastics Felts Vinyl Floor Tiles Paints Decorative Finishes

#### 2. EXTENT OF DAMAGE

<u>HIGH = 3</u>	<u>MEDIUM = 2</u>	<u>LOW = 1</u>	<u>NEGLIGIBLE = 0</u>
Extensive Damage Delamination of Spray Coats Delamination of Thermal Insulation Visible Debris	Less Extensive Damage Significant Breakage of Materials Several Smaller Areas Revealing Loose Fibre	Minimal Damage A Few Scratches or Surface Marks Some Broken Edges on Boards or Tiles etc.	Good Condition No Visible Damage

#### 3. SURFACE TREATMENT

<u>HIGH = 3</u>	<u>MEDIUM = 2</u>	<u>LOW = 1</u>	<u>NEGLIGIBLE = 0</u>
Unsealed Lagging Unsealed Sprays	Unsealed Asbestos Insulating Board Encapsulated Lagging Encapsulated Sprays	Enclosed Sprays and Lagging Asbestos Insulating Board with Exposed Face Painted or Encapsulated	Composites Reinforced Plastics Resins Vinyl Tiles



#### 4. ASBESTOS TYPE

<u>HIGH = 3</u>	<u>MEDIUM = 2</u>	<u>LOW = 1</u>
Crocidolite	Amphiboles Excluding Crocidolite	Chrysotile

#### 5. TOTAL MATERIAL ASSESSMENT

This is the numerical material assessment score, which is the result of adding scores in previous columns.

#### PRIORITY ASSESSMENT ALGORITHM

The priority assessment associated with activity, location, extent and amount of material is also given a numerical score as indicated below (taken from MDHS HSG: 277: A Comprehensive Guide to Managing Asbestos in Premises.).

The priority assessment algorithm should be carried out by persons who have a detailed knowledge of the activities within the site.

The priority assessment recorded by the surveyor is based on limited knowledge. It is advised that the duty holder confirms the priority assessment algorithm using appendix 3 of HSG 277: A Comprehensive Guide to Managing Asbestos in Premises.

#### 6. Main type of Activity

SAMPLE VARIABLE	SCORE	EXAMPLES OF SCORE VARIABLES
Main type of activity	0	Rare disturbance, e.g. little used store room
	1	Low disturbance, e.g. Office type activity
	2	Periodic disturbance, e.g. industrial or vehicular activity which may contact ACMs
	3	High levels of disturbance e.g. fire door with AIB sheet in constant use.

Vulnerability to damage of a material is dependant on the location, accessibility of the material and the amount present

#### 7. Location

SAMPLE VARIABLE	SCORE	EXAMPLES OF SCORE VARIABLES
Location	0	Outdoors
	1	Large rooms or well ventilated areas
	2	Rooms up to 100m <sup>2</sup>
	3	Confined spaces

### 8. Accessibility

SAMPLE VARIABLE	SCORE	EXAMPLES OF SCORE VARIABLES
Accessibility	0	Usually inaccessible or unlikely to be disturbed
	1	Occasionally likely to be disturbed
	2	Easily disturbed
	3	Routinely disturbed

### 9. The extent or amount of material

SAMPLE VARIABLE	SCORE	EXAMPLES OF SCORE VARIABLES
Extent/ Amount of material	0	Small amounts or items, e.g. strings, gaskets
	1	<10m <sup>2</sup> or 10m pipe run
	2	10-50m <sup>2</sup> or 10-50m pipe run
	3	>50m <sup>2</sup> or >50m pipe run

### 10. Average of (7+8+9)

#### Human Exposure Potential

The client can add the scores for number of occupants, frequency and time in use and frequency and type of maintenance to give a total priority assessment. The client can then decide the required action.

### 11. Number of occupants - Human Exposure Potential

SAMPLE VARIABLE	SCORE	EXAMPLES OF SCORE VARIABLES
Number of Occupants	0	None
	1	1-3
	2	4-10
	3	>10

**12. Frequency of use**

<b>SAMPLE VARIABLE</b>	<b>SCORE</b>	<b>EXAMPLES OF SCORE VARIABLES</b>
Frequency of Use	0	Infrequent
	1	Monthly
	2	Weekly
	3	Daily

**13. Average time each use**

<b>SAMPLE VARIABLE</b>	<b>SCORE</b>	<b>EXAMPLES OF SCORE VARIABLES</b>
Average time each use	0	<1 hour
	1	>1 - <3 hours
	2	>3 - <6 hours
	3	>6 hours

**14. Average of (11+12+13)**

**Maintenance Activity**

**15. Type of Maintenance**

This is the likelihood of disturbance of the material during maintenance / housekeeping procedures.

<b>SAMPLE VARIABLE</b>	<b>SCORE</b>	<b>EXAMPLES OF SCORE VARIABLES</b>
Type of Maintenance Activity	0	Minor disturbance (e.g. possibility of contact when gaining access). Low Disturbance (e.g. changing light bulbs in AIB ceiling).
	1	Medium disturbance (e.g. lifting one or two ceiling tiles to access a valve).
	2	High level of disturbance (e.g. moving a number of AIB ceiling tiles to replace a valve or for re-cabling).
	3	

**16. Frequency of Maintenance**

<b>SAMPLE VARIABLE</b>	<b>SCORE</b>	<b>EXAMPLES OF SCORE VARIABLES</b>
Frequency of Maintenance Activity	0	Asbestos containing material (ACM) unlikely to be disturbed for maintenance
	1	<1 per year
	2	>1 per year
	3	> 1 per month

**17. Average of (15+16)**

## ASBESTOS MATERIALS

### 1. ASBESTOS INSULATING BOARDS

Asbestos insulating boards gained popularity in the 50's, 60's and 70's. The boards have on occasions, contained all three asbestos fibre types but by far the most common is amosite (brown asbestos). Blue asbestos is rarely encountered in this type of product, probably essentially due to the higher cost of crocidolite compared to the other two main types. The boards are often of relatively low density and are usually distinguished from cement boards by being less than 700 kilos per cubic metre. The asbestos fibre may be present up to a w/w concentration of around 40% with 16 to 25% being the norm. The boards have found application in the form of ceiling tiles and boards and are often suspended in a grid, boards are used for partitioning, ceilings and structural steel work protection when cut to size.

Boards were available manufactured to a variety of thickness depending on the application. The asbestos fibre is contained within a cementitious matrix often containing other mineral fillers.

Following only minimal abrasion or mechanical working high atmospheric fibre concentrations may be generated and if the boards are energetically worked then serious contamination may result.

The Asbestos Licensing Regulations and the Control of Asbestos Regulations dictated that work with asbestos insulating board requires an asbestos licence.

### 2. SPRAYED COATINGS AND LAGGING (THERMAL INSULATION)

Sprayed asbestos in buildings contains mainly Amosite, the use of Crocidolite and Chrysotile is less common. Sprayed coatings were applied in order to provide anti-condensation and acoustic control in buildings and for fire protection of structural steel.

Sprayed coatings are very friable and are likely to release fibres, especially if disturbed during maintenance, repair or building works. Sprayed coatings usually have an 85% plus asbestos fibre content, it is possible that the binding medium may degrade with age resulting in fibre release.

Asbestos lagging is a term which covers a wide range of materials including pipe sections, slabs, rope, tape corrugated asbestos paper, quilts, felts, blankets and plastered cement. The asbestos fibre content of lagging depends on the materials type. Asbestos quilts, blankets and mattresses may contain approximately 100% asbestos. Preformed thermal insulation materials made of magnesia and calcium silicate were reinforced with approximately 15% Amosite or a mixture of Amosite and Chrysotile. Older preformed pipe insulation may also contain Crocidolite. The likelihood of fibre release from lagging depends on its composition, friability and state of repair, but it is particularly susceptible to disturbance during maintenance or building works or from water leaks from pipework.

### 3. ASBESTOS CEMENT PRODUCTS

Asbestos cement products generally contain 10-15% asbestos fibre bound in a matrix of Portland cement or autoclaved calcium silicate. All three main asbestos fibre types have been used in the manufacture of asbestos cement but the majority contains Chrysotile on its own. Corrugated sheets are largely used as roofing and wall cladding and have a density between 1200 kg/m<sup>3</sup> to 1600 kg/m<sup>3</sup>. The asbestos fibres in asbestos cement are firmly bound within the cement matrix and will only be released if the material is mechanically damaged or deterioration with age.

### 4. ASBESTOS ROPE

Asbestos rope has been used mainly as pipework thermal insulation and stemming around pipework penetrations. The asbestos content of rope material approaches 100% and all three main types of asbestos has been used in its manufacture.

### 5. MASTIC, SEALANTS, PUTTIES AND ADHESIVES

Small quantities of asbestos fibre have been included in certain mastics and sealants in order to impart anti-slumping characteristics and to improve coverage and anti-cracking properties. The only danger of fibre release is during sanding or removal of the materials.

6. **FLOORING MATERIALS**

Small quantities of asbestos fibre have been added to the matrix of certain PVC and thermoplastic floor tiles and sheet materials. Certain floor tiles have an asbestos based paper backing.

The asbestos fibres within the floor material may be released as the material wears. The rate of release is expected to be very low except under conditions of extreme heavy wear.

7. **TEXTURED COATINGS AND PAINTS**

Small amounts of asbestos fibres may be found in textured coatings or paint e.g. "Artex". The supply and application of these materials were prohibited by the Asbestos (Prohibitions) (Amendment) Regulations 1992

It is imperative that these materials are not sanded or scraped off dry. Removal should be under controlled conditions.

**ASBESTOS REGISTER**

<b>Ref</b>	<b>Room</b>	<b>Location</b>	<b>Type of Asbestos</b>	<b>Total Risk Assessment</b>
01/5	BIKE STORE	BOARDS TO DOOR	AMOSITE	11

**NO ACCESS REGISTER**

<b>Ref</b>	<b>Room</b>	<b>Location</b>
07	ROOF VOID	ENTIRE LOCATION
43/1	CUPBOARD	CEILING



## ***The Rowans***

### **DISCUSSION**

#### **Boards to doors. Ref 01/5**

Boards to doors in the above reference location were found to contain Amosite (Brown asbestos), see Photo Ref: 1.

They are labelled and may be left in situ.

When removal is required they should be removed with doors intact and disposed of as asbestos waste, a licensed asbestos contractor should be used to carry out the works in accordance with the removal of asbestos regulations 2006.

### **OMISSIONS**

N/A

## **BUILDING SURVEY REPORT SHEETS**

PLEASE READ THE FOLLOWING NOTES IN CONJUNCTION WITH THE REPORT SHEETS

### **FUSE BOXES**

It is often found that within fuse boxes Chrysotile (White Asbestos) rope is used as flash guards. No access was possible to the fuses themselves for safety reasons. It is therefore advised that the asbestos material be assumed present until proven otherwise.

### **FIRE DOORS**

Fire doors may contain concealed asbestos boarding. In the case of a non-destructive survey it was not possible to ascertain its presence, therefore it is advised that it be assumed present until proven otherwise.

### **SKYLIGHTS**

Skylights have been known to contain concealed asbestos rope, this should be noted and investigated further before any work is carried out on the skylights.

### **AIR CONDITIONING DUCTING**

Air conditioning ducting has been known to contain a concealed asbestos rope caulking and gaskets, as the internal sections were inaccessible we are unable to comment as to whether this gasket is present. Therefore care should be taken if any work is to be carried out within the air conditioning ducts.

### **INACCESSIBLE AREAS**

No comments can be made as to the presence of asbestos based material in areas where no access was gained.

### **SURVEY RESTRICTIONS**

Using the survey methodology as agreed with our client, and so far as reasonably practicable, every effort has been made, to ensure that all asbestos containing materials (ACM's) were identified. When undertaking a survey, all accessible areas are examined using a combination of visual inspection and bulk sample collection. All surveyors are integrated into the AOH Limited UKAS accredited inspection scheme for surveying buildings for ACM's and are suitably trained and experienced. The methods used for undertaking surveys are accepted by the Health & Safety Executive. However, it is possible that some asbestos containing materials remain undetected within the building due to:

- Asbestos being present within areas not forming part of this survey.
- The presence of floor ducts, where the covers are not easily lifted. The client may be expected to arrange for difficult access covers to be removed if full access is to be gained.
- ACM's being incorporated within or under the structure, preventing detection using standard visual, sampling, or survey methods.
- Sampling may have been restricted due to the cosmetic damage that may occur to the decoration.
- In areas where large amounts of visually similar materials exist it may be possible for different types of material being used. The samples collected for analysis shall be deemed to be representative of the whole area.
- Trace residues beneath non-asbestos insulations. It may not be possible to identify such residues unless all or most of the insulation is removed.
- Restricted or no access areas. These may be locked, restricted due to the area being of a sensitive nature, the risk to the surveyor's safety is compromised or the surveyor is requested not to access the area by on site staff. If access is required the client should arrange for these areas to be accessed without compromising safety.

- Height restrictions. Our surveyors will only access heights if deemed safe to do so with standard equipment and by risk assessments carried out to the Work at Height Regulations 2005. Access to roof areas and ceiling voids will be, on occasions limited due to excessive access height.
- Textured coatings may contain small quantities of asbestos in a non-homogeneous mixture, making detection occasionally impossible. Due to the application techniques and heterogeneous nature of some of the materials, sample results may be unrepresentative of the whole. Scanning Electron Microscopy can be carried out at extra cost to provide a greater degree of accuracy. This will only be carried out at the clients request.
- Asbestos fibre within rubber gaskets, bitumen products, mastics and magnesium oxychlorate products are well bound in the matrix of the material therefore any appreciable asbestos fibre release will be negligible under foreseeable circumstances. A positive analysis of such products is difficult using the techniques used these are omitted from the survey.
- Live electrical installations. AOH Ltd surveyors will not enter electrical installations unless sufficient documented isolation certification is available. Suitable and sufficient safe working procedures shall be instigated if surveyors are requested to enter live areas.

AOH Ltd cannot accept liability for loss, injury, damage or penalty due to errors or omissions within this report.

AOH Ltd cannot accept liability for cosmetic or structural damage incurred during sampling and surveying. By its very nature, an asbestos survey often results in a reasonable degree of damage to components during inspection to allow for subsequent laboratory identification.

The scope of the survey should be carefully prescribed and confirmed. AOH Limited contract enquiry form CEO1 must be completed and signed by the Authorising officer prior to commencement. Only by providing suitable and sufficient information, including detailed floor plans, will the clients requirements and AOH's activities be fully coordinated.

Entry into confined spaces will not be permitted until the building owner/duty holder has been informed and the area certified as safe.

Although our surveyors complete the priority assessment with care and diligence, the ultimate responsibility for the accuracy of the priority assessment lies with the client.

### Type 3

Whilst type 3 surveys are invasive by nature, our experience of buildings leads us to conclude that asbestos based materials are frequently concealed within the building fabric. Packers behind stud walls or tiles are common.

No survey can be considered as a complete register of hazardous materials due to the above restrictions, and we cannot guarantee that all asbestos materials within the site have been found or identified.

During destructive surveys all efforts will be made to identify all asbestos containing materials. However it is not reasonably practicable to state that a building is asbestos free without completely demolishing the structure. It is thus impossible to guarantee absolutely, even within the context of a "Type 3" survey, that absolutely all of the ACM's have been located.

Unless fully controlled within the context of a Type 3 survey, AOH Limited will not enter severely contaminated areas for survey or sampling purposes, due to the risk of asbestos disturbance and staff exposure

If it is not possible to fully examine any individual building structure, certain assumptions may need to be made regarding the likely presence of asbestos materials. These assumptions will be based upon more complete examination of other areas. In addition asbestos may be concealed in walls, within boxing or under inaccessible floors etc.

No comment can be made relating to the presence of asbestos containing materials in areas where access was not possible

## AOH Ltd BUILDING SURVEY REPORT

**PROPERTY: THE ROWANS**

**FLOOR: GROUND**

**BLOCK:**

**AREA SURVEYED: BIKE STORE**

REF	DESCRIPTION	Samp	Photo Ref	ANALYSIS/OBSERVATION	Quant / UOM	Prod Type	Dam	Surface Treat	Asbestos Type	Tot. Risk Ass	AOH Action Priority	FUTURE ACTION / COMMENTS
01/1	CEILING	-	-	WOOD / FELT	-	-	-	-	-	-	-	
01/2	WALLS	-	-	BRICK	-	-	-	-	-	-	-	
01/3	FLOOR	-	-	CONCRETE	-	-	-	-	-	-	-	
01/4	PIPEWORK	-	-	EXPOSED AND UNLAGGED	-	-	-	-	-	-	-	
01/5	BOARDS TO DOOR	✓ 62148	✓ 1	AMOSITE	2 x 1m <sup>2</sup>	2	0	1	2	11	LOW	LABELLED
		-	-		-	-	-	-	-	-	-	
		-	-		-	-	-	-	-	-	-	
		-	-		-	-	-	-	-	-	-	
		-	-		-	-	-	-	-	-	-	

**NOTES:**

## AOH Ltd BUILDING SURVEY REPORT

**PROPERTY: THE ROWANS**

**FLOOR: GROUND**

**BLOCK:**

**AREA SURVEYED: STORE**

REF	DESCRIPTION	Samp	Photo Ref	ANALYSIS/OBSERVATION	Quant / UOM	Prod Type	Dam	Surface Treat	Asbestos Type	Tot. Risk Ass	AOH Action Priority	FUTURE ACTION / COMMENTS
02/1	CEILING	-	-	FELT / WOOD	-	-	-	-	-	-	-	
02/2	WALLS	-	-	BRICK	-	-	-	-	-	-	-	
02/3	FLOOR	-	-	CONCRETE	-	-	-	-	-	-	-	
02/4	PIPEWORK	-	-	EXPOSED AND UNLAGGED	-	-	-	-	-	-	-	
		-	-		-	-	-	-	-	-	-	
		-	-		-	-	-	-	-	-	-	
		-	-		-	-	-	-	-	-	-	
		-	-		-	-	-	-	-	-	-	
		-	-		-	-	-	-	-	-	-	

**NOTES:**

## AOH Ltd BUILDING SURVEY REPORT

**PROPERTY: THE ROWANS** **FLOOR: GROUND** **BLOCK:**

**AREA SURVEYED: STORE**

REF	DESCRIPTION	Samp	Photo Ref	ANALYSIS/OBSERVATION	Quant / UOM	Prod Type	Dam	Surface Treat	Asbestos Type	Tot. Risk Ass	AOH Action Priority	FUTURE ACTION / COMMENTS
03/1	CEILING	-	-	WOOD / FELT	-	-	-	-	-	-	-	
03/2	WALLS	-	-	BRICK	-	-	-	-	-	-	-	
03/3	FLOOR	-	-	CONCRETE	-	-	-	-	-	-	-	
03/4	PIPEWORK	-	-	EXPOSED AND UNLAGGED	-	-	-	-	-	-	-	
03/5	BOXING	✓ 85749	-	NONE DETECTED	-	-	-	-	-	-	-	
		-	-		-	-	-	-	-	-	-	
		-	-		-	-	-	-	-	-	-	
		-	-		-	-	-	-	-	-	-	
		-	-		-	-	-	-	-	-	-	

**NOTES:**

## AOH Ltd BUILDING SURVEY REPORT

**PROPERTY: THE ROWANS**

**FLOOR: GROUND**

**BLOCK:**

**AREA SURVEYED: W.C.**

REF	DESCRIPTION	Samp	Photo Ref	ANALYSIS/OBSERVATION	Quant / UOM	Prod Type	Dam	Surface Treat	Asbestos Type	Tot. Risk Ass	AOH Action Priority	FUTURE ACTION / COMMENTS
04/1	CEILING	-	-	WOOD / FELT	-	-	-	-	-	-	-	
04/2	WALLS	-	-	BRICK	-	-	-	-	-	-	-	
04/3	FLOOR	-	-	CONCRETE	-	-	-	-	-	-	-	
04/4	PIPEWORK	-	-	EXPOSED AND UNLAGGED	-	-	-	-	-	-	-	
04/5	CISTERN	✓ 85750	-	NONE DETECTED	-	-	-	-	-	-	-	
		-	-		-	-	-	-	-	-	-	
		-	-		-	-	-	-	-	-	-	
		-	-		-	-	-	-	-	-	-	
		-	-		-	-	-	-	-	-	-	

**NOTES:**

**SURVEYOR:**

**REPORT NO:** LEC/A1/18308L

**DATE OF INSPECTION:** 19.03.08

**PAGE 23 OF 73**

Tyneside Office Tel.No. (0191) 263 5115

Leicester Office Tel.No. (0116) 244 2504

Rotherham Office Tel.No. (01709) 876675

Chester Office Tel.No. (01244) 535300

SF2 Version April 2007

## AOH Ltd BUILDING SURVEY REPORT

**PROPERTY: THE ROWANS** **FLOOR: FIRST** **BLOCK:**

**AREA SURVEYED: OFFICE**

REF	DESCRIPTION	Samp	Photo Ref	ANALYSIS/OBSERVATION	Quant / UOM	Prod Type	Dam	Surface Treat	Asbestos Type	Tot. Risk Ass	AOH Action Priority	FUTURE ACTION / COMMENTS
05/1	CEILING	-	-	PLASTER	-	-	-	-	-	-	-	
05/2	WALLS	-	-	BRICK / PLASTER	-	-	-	-	-	-	-	
05/3	FLOOR	-	-	CARPET / WOOD	-	-	-	-	-	-	-	
05/4	PIPEWORK	-	-	EXPOSED AND UNLAGGED	-	-	-	-	-	-	-	
05/5	BOARD TO FIREPLACE	-	-	WOOD	-	-	-	-	-	-	-	
		-	-		-	-	-	-	-	-	-	
		-	-		-	-	-	-	-	-	-	
		-	-		-	-	-	-	-	-	-	
		-	-		-	-	-	-	-	-	-	

**NOTES:**

---



---



---



## AOH Ltd BUILDING SURVEY REPORT

**PROPERTY: THE ROWANS**

**FLOOR: FIRST**

**BLOCK:**

**AREA SURVEYED: CORRIDOR**

REF	DESCRIPTION	Sampl	Photo Ref	ANALYSIS/OBSERVATION	Quant / UOM	Prod Type	Dem	Surface Treat	Asbestos Type	Tot. Risk Ass	AOH Action Priority	FUTURE ACTION / COMMENTS
06/1	CEILING	-	-	PLASTER	-	-	-	-	-	-	-	
06/2	WALLS	-	-	BRICK / PLASTER	-	-	-	-	-	-	-	
06/3	FLOOR	-	-	CARPET / WOOD	-	-	-	-	-	-	-	
06/4	PIPEWORK	-	-	EXPOSED AND UNLAGGED	-	-	-	-	-	-	-	
06/5	HATCH TO ROOF VOID	-	-	WOOD	-	-	-	-	-	-	-	
06/6	ELECTRICAL SWITCHGEAR	-	-	MODERN	-	-	-	-	-	-	-	
		-	-		-	-	-	-	-	-	-	
		-	-		-	-	-	-	-	-	-	
		-	-		-	-	-	-	-	-	-	

**NOTES:**

**SURVEYOR:**

**REPORT NO:** LEC/A1/18308L

**DATE OF INSPECTION:** 19.03.08

**PAGE 25 OF 73**

Tyneside Office Tel.No. (0191) 263 5115

Leicester Office Tel.No. (0116) 244 2504

Rotherham Office Tel.No. (01709) 876675

Chester Office Tel.No. (01244) 535300

SF2 Version April 2007

## AOH Ltd BUILDING SURVEY REPORT

**PROPERTY: THE ROWANS**

**FLOOR: FIRST**

**BLOCK:**

**AREA SURVEYED: ROOF VOID**

REF	DESCRIPTION	Samp	Photo Ref	ANALYSIS/OBSERVATION	Quant / UOM	Prod Type	Dam	Surface Treat	Asbestos Type	Tot. Risk Ass	AOH Action Priority	FUTURE ACTION / COMMENTS
07/1	CEILING	-	-		-	-	-	-	-	-	-	
07/2	WALLS	-	-		-	-	-	-	-	-	-	
07/3	FLOOR	-	-		-	-	-	-	-	-	-	
07/4	PIPEWORK	-	-		-	-	-	-	-	-	-	
		-	-		-	-	-	-	-	-	-	
		-	-		-	-	-	-	-	-	-	
		-	-		-	-	-	-	-	-	-	
		-	-		-	-	-	-	-	-	-	
		-	-		-	-	-	-	-	-	-	

**NOTES: NO ACCESS TO INSPECT.**

**SURVEYOR:**

**REPORT NO: LEC/A1/18308L**

**DATE OF INSPECTION: 19.03.08**

**PAGE 26 OF 73**

Tyneside Office Tel.No. (0191) 263 5115

Leicester Office Tel.No. (0116) 244 2504

Rotherham Office Tel.No. (01709) 876675

Chester Office Tel.No. (01244) 535300

SF2 Version April 2007

## AOH Ltd BUILDING SURVEY REPORT

**PROPERTY: THE ROWANS**

**FLOOR: FIRST**

**BLOCK:**

**AREA SURVEYED: OFFICE 5**

REF	DESCRIPTION	Samp	Photo Ref	ANALYSIS/OBSERVATION	Quant / UOM	Prod Type	Dam	Surface Treat	Asbestos Type	Tot. Risk Ass	AOH Action Priority	FUTURE ACTION / COMMENTS
08/1	CEILING	-	-	PLASTER	-	-	-	-	-	-	-	
08/2	WALLS	-	-	BRICK / PLASTER	-	-	-	-	-	-	-	
08/3	FLOOR	-	-	CARPET / WOOD	-	-	-	-	-	-	-	
08/4	PIPEWORK	-	-	EXPOSED AND UNLAGGED	-	-	-	-	-	-	-	
		-	-		-	-	-	-	-	-	-	
		-	-		-	-	-	-	-	-	-	
		-	-		-	-	-	-	-	-	-	
		-	-		-	-	-	-	-	-	-	
		-	-		-	-	-	-	-	-	-	

**NOTES:**

## AOH Ltd BUILDING SURVEY REPORT

**PROPERTY: THE ROWANS**

**FLOOR: FIRST**

**BLOCK:**

**AREA SURVEYED: OFFICE 6**

REF	DESCRIPTION	Sampl	Photo Ref	ANALYSIS/OBSERVATION	Quant / UOM	Prod Type	Dam	Surface Treat	Asbestos Type	Tot Risk Ass	AOH Action Priority	FUTURE ACTION / COMMENTS
09/1	CEILING	-	-	PLASTER	-	-	-	-	-	-	-	
09/2	WALLS	-	-	BRICK / PLASTER	-	-	-	-	-	-	-	
09/3	FLOOR	-	-	CARPET / WOOD	-	-	-	-	-	-	-	
09/4	PIPEWORK	-	-	EXPOSED AND UNLAGGED	-	-	-	-	-	-	-	
09/5	BOARD TO WALL	-	-	WOOD	-	-	-	-	-	-	-	
		-	-		-	-	-	-	-	-	-	
		-	-		-	-	-	-	-	-	-	
		-	-		-	-	-	-	-	-	-	
		-	-		-	-	-	-	-	-	-	

**NOTES:**

**SURVEYOR:**

**REPORT NO:** LEC/A1/18308L

**DATE OF INSPECTION:** 19.03.08

**PAGE 28 OF 73**

SF2 Version April 2007

Tyneside Office Tel.No. (0191) 263 5115

Leicester Office Tel.No. (0116) 244 2504

Rotherham Office Tel.No. (01709) 876675

Chester Office Tel.No. (01244) 535300

## AOH Ltd BUILDING SURVEY REPORT

**PROPERTY: THE ROWANS**

**FLOOR: FIRST**

**BLOCK:**

**AREA SURVEYED: OFFICE**

REF	DESCRIPTION	Samp	Photo Ref	ANALYSIS/OBSERVATION	Quant / UOM	Prod Type	Den	Surface Treat	Asbestos Type	Tot. Risk Ass	AOH Action Priority	FUTURE ACTION / COMMENTS
10/1	CEILING	-	-	PLASTER	-	-	-	-	-	-	-	
10/2	WALLS	-	-	BRICK / PLASTER	-	-	-	-	-	-	-	
10/3	FLOOR	-	-	CARPET / WOOD	-	-	-	-	-	-	-	
10/4	PIPEWORK	-	-	EXPOSED AND UNLAGGED	-	-	-	-	-	-	-	
10/5	BOXING	-	-	WOOD - NO ACCESS TO INSPECT	-	-	-	-	-	-	-	
		-	-		-	-	-	-	-	-	-	
		-	-		-	-	-	-	-	-	-	
		-	-		-	-	-	-	-	-	-	
		-	-		-	-	-	-	-	-	-	

**NOTES:**

**SURVEYOR:**

**REPORT NO:** LEC/A1/18308L

**DATE OF INSPECTION:** 19.03.08

**PAGE 29 OF 73**

Tyneside Office Tel.No. (0191) 263 5115

Leicester Office Tel.No. (0116) 244 2504

Rotherham Office Tel.No. (01709) 876675

Chester Office Tel.No. (01244) 535300

SP2 Version April 2007

## AOH Ltd BUILDING SURVEY REPORT

**PROPERTY: THE ROWANS** **FLOOR: FIRST** **BLOCK:**

**AREA SURVEYED: OFFICE**

REF	DESCRIPTION	Samp	Photo Ref	ANALYSIS/OBSERVATION	Quant / UOM	Prod Type	Dam	Surface Treat	Asbestos Type	Tot. Risk Ass	AOH Action Priority	FUTURE ACTION / COMMENTS
11/1	CEILING	-	-	PLASTER	-	-	-	-	-	-	-	
11/2	WALLS	-	-	BRICK / PLASTER	-	-	-	-	-	-	-	
11/3	FLOOR	-	-	CARPET / WOOD	-	-	-	-	-	-	-	
11/4	PIPEWORK	-	-	EXPOSED AND UNLAGGED	-	-	-	-	-	-	-	
11/5	BOXING	-	-	WOOD - NO ACCESS TO INSPECT	-	-	-	-	-	-	-	
		-	-		-	-	-	-	-	-	-	
		-	-		-	-	-	-	-	-	-	
		-	-		-	-	-	-	-	-	-	
		-	-		-	-	-	-	-	-	-	

**NOTES:**

---



---



---

## AOH Ltd BUILDING SURVEY REPORT

**PROPERTY: THE ROWANS**

**FLOOR: FIRST**

**BLOCK:**

**AREA SURVEYED: OFFICE**

REF	DESCRIPTION	Samg	Photo Ref	ANALYSIS/OBSERVATION	Quant / UOM	Prod Type	Dam	Surface Treat	Asbestos Type	Tot. Risk Ass	AOH Action Priority	FUTURE ACTION / COMMENTS
12/1	CEILING	-	-	PLASTER	-	-	-	-	-	-	-	
12/2	WALLS	-	-	BRICK / PLASTER	-	-	-	-	-	-	-	
12/3	FLOOR	-	-	WOOD	-	-	-	-	-	-	-	
12/4	PIPEWORK	-	-	EXPOSED AND UNLAGGED	-	-	-	-	-	-	-	
		-	-		-	-	-	-	-	-	-	
		-	-		-	-	-	-	-	-	-	
		-	-		-	-	-	-	-	-	-	
		-	-		-	-	-	-	-	-	-	
		-	-		-	-	-	-	-	-	-	

**NOTES:**

## AOH Ltd BUILDING SURVEY REPORT

**PROPERTY: THE ROWANS** **FLOOR: FIRST** **BLOCK:**

**AREA SURVEYED: CORRIDOR**

REF	DESCRIPTION	Samp	Photo Ref	ANALYSIS/OBSERVATION	Quant / UOM	Prod Type	Dam	Surface Treat	Asbestos Type	Tot. Risk Ass	AOH Action Priority	FUTURE ACTION / COMMENTS
13/1	CEILING	-	-	PLASTER	-	-	-	-	-	-	-	
13/2	WALLS	-	-	BRICK / PLASTER	-	-	-	-	-	-	-	
13/3	FLOOR	-	-	WOOD / NON SLIP	-	-	-	-	-	-	-	
13/4	PIPEWORK	-	-	EXPOSED AND UNLAGGED	-	-	-	-	-	-	-	
		-	-		-	-	-	-	-	-	-	
		-	-		-	-	-	-	-	-	-	
		-	-		-	-	-	-	-	-	-	
		-	-		-	-	-	-	-	-	-	
		-	-		-	-	-	-	-	-	-	

**NOTES:**



## AOH Ltd BUILDING SURVEY REPORT

**PROPERTY: THE ROWANS**

**FLOOR: FIRST**

**BLOCK:**

**AREA SURVEYED: W.C.**

REF	DESCRIPTION	Samp	Photo Ref	ANALYSIS/OBSERVATION	Quant / UOM	Prod Type	Dum	Surface Treat	Asbestos Type	Tot. Risk Ass	AOH Action Priority	FUTURE ACTION / COMMENTS
14/1	CEILING	-	-	PLASTER	-	-	-	-	-	-	-	
14/2	WALLS	-	-	BRICK / PLASTER	-	-	-	-	-	-	-	
14/3	FLOOR	-	-	WOOD / NON SLIP	-	-	-	-	-	-	-	
14/4	PIPEWORK	-	-	EXPOSED AND UNLAGGED	-	-	-	-	-	-	-	
14/5	BOXING	-	-	WOOD - NO ACCESS TO INSPECT	-	-	-	-	-	-	-	
14/6	CISTERN	-	-	CERAMIC	-	-	-	-	-	-	-	
		-	-		-	-	-	-	-	-	-	
		-	-		-	-	-	-	-	-	-	
		-	-		-	-	-	-	-	-	-	

**NOTES:**

## AOH Ltd BUILDING SURVEY REPORT

**PROPERTY: THE ROWANS** **FLOOR: FIRST** **BLOCK:**

**AREA SURVEYED: W.C.**

REF	DESCRIPTION	Samp	Photo Ref	ANALYSIS/OBSERVATION	Quant / DOM	Prod Type	Dam	Surface Treat	Asbestos Type	Tot. Risk Ass	AOH Action Priority	FUTURE ACTION / COMMENTS
15/1	CEILING	-	-	PLASTER	-	-	-	-	-	-	-	
15/2	WALLS	-	-	BRICK / PLASTER / CERAMIC TILE	-	-	-	-	-	-	-	
15/3	FLOOR	-	-	WOOD / NON SLIP	-	-	-	-	-	-	-	
15/4	PIPEWORK	-	-	EXPOSED AND UNLAGGED	-	-	-	-	-	-	-	
15/5	CISTERN	-	-	CERAMIC	-	-	-	-	-	-	-	
		-	-		-	-	-	-	-	-	-	
		-	-		-	-	-	-	-	-	-	
		-	-		-	-	-	-	-	-	-	
		-	-		-	-	-	-	-	-	-	

**NOTES:**

---



---



---

## AOH Ltd BUILDING SURVEY REPORT

**PROPERTY: THE ROWANS**

**FLOOR: FIRST**

**BLOCK:**

**AREA SURVEYED: KITCHEN**

REF	DESCRIPTION	Samp	Photo Ref	ANALYSIS/OBSERVATION	Quant / UOM	Prod Type	Dem	Surface Treat	Asbestos Type	Tot. Risk Ass	AOH Action Priority	FUTURE ACTION / COMMENTS
16/1	CEILING	-	-	PLASTER	-	-	-	-	-	-	-	
16/2	WALLS	-	-	BRICK / PLASTER / CERAMIC TILE	-	-	-	-	-	-	-	
16/3	FLOOR	-	-	WOOD / NON SLIP	-	-	-	-	-	-	-	
16/4	PIPEWORK	-	-	EXPOSED AND UNLAGGED	-	-	-	-	-	-	-	
16/5	PAD TO SINK	✓ 85751	-	NONE DETECTED	-	-	-	-	-	-	-	
		-	-		-	-	-	-	-	-	-	
		-	-		-	-	-	-	-	-	-	
		-	-		-	-	-	-	-	-	-	
		-	-		-	-	-	-	-	-	-	

**NOTES:**

## AOH Ltd BUILDING SURVEY REPORT

**PROPERTY: THE ROWANS**

**FLOOR: GROUND/FIRST**

**BLOCK:**

**AREA SURVEYED: STAIRWELL / ENTRANCE**

REF	DESCRIPTION	Samp	Photo Ref	ANALYSIS/OBSERVATION	Quant / UOM	Prod Type	Dam	Surface Treat	Asbestos Type	Tot. Risk Ass	AOH Action Priority	FUTURE ACTION / COMMENTS
17/1	CEILING	-	-	PLASTER	-	-	-	-	-	-	-	
17/2	WALLS	-	-	BRICK / PLASTER / WOOD	-	-	-	-	-	-	-	
17/3	FLOOR	-	-	QUARRY TILE	-	-	-	-	-	-	-	
17/4	PIPEWORK	-	-	EXPOSED AND UNLAGGED / FOAM	-	-	-	-	-	-	-	
17/5	BOARD ABOVE DOOR	-	-	WOOD	-	-	-	-	-	-	-	
17/6	BOARDS TO UNDERSIDE OF STAIRS	-	-	WOOD	-	-	-	-	-	-	-	
		-	-		-	-	-	-	-	-	-	
		-	-		-	-	-	-	-	-	-	
		-	-		-	-	-	-	-	-	-	

**NOTES:**

## AOH Ltd BUILDING SURVEY REPORT

**PROPERTY: THE ROWANS**

**FLOOR: GROUND**

**BLOCK:**

**AREA SURVEYED: LOUNGE 1**

REF	DESCRIPTION	Samp	Photo Ref	ANALYSIS/OBSERVATION	Quant / UOM	Prod Type	Dam.	Surface Treat	Asbestos Type	Tot. Risk Ass	AOH Action Priority	FUTURE ACTION / COMMENTS
18/1	CEILING	-	-	PLASTER	-	-	-	-	-	-	-	
18/2	WALLS	-	-	BRICK / PLASTER	-	-	-	-	-	-	-	
18/3	FLOOR	-	-	CARPET	-	-	-	-	-	-	-	
18/4	PIPEWORK	-	-	EXPOSED AND UNLAGGED	-	-	-	-	-	-	-	
18/5	BOARDS TO WALL	✓ 85752	-	NONE DETECTED	-	-	-	-	-	-	-	
		-	-		-	-	-	-	-	-	-	
		-	-		-	-	-	-	-	-	-	
		-	-		-	-	-	-	-	-	-	
		-	-		-	-	-	-	-	-	-	

**NOTES:**

**SURVEYOR:**

**REPORT NO:** LEC/A1/18308L

**DATE OF INSPECTION:** 19.03.08

**PAGE 37 OF 73**

Tyneside Office Tel.No. (0191) 263 5115

Leicester Office Tel.No. (0116) 244 2504

Rotherham Office Tel.No. (01709) 876675

Chester Office Tel.No. (01244) 535300

SP2 Version April 2007

## AOH Ltd BUILDING SURVEY REPORT

**PROPERTY: THE ROWANS**

**FLOOR: GROUND**

**BLOCK:**

**AREA SURVEYED: CUPBOARD UNDER STAIRS**

REF	DESCRIPTION	Samp	Photo Ref	ANALYSIS/OBSERVATION	Quant / UOM	Prod Type	Dam	Surface Treat	Asbestos Type	Tot. Risk Asa	AOH Action Priority	FUTURE ACTION / COMMENTS
19/1	CEILING	-	-	WOOD	-	-	-	-	-	-	-	
19/2	WALLS	-	-	BRICK	-	-	-	-	-	-	-	
19/3	FLOOR	-	-	CONCRETE	-	-	-	-	-	-	-	
19/4	PIPEWORK	-	-	NOT APPLICABLE	-	-	-	-	-	-	-	
		-	-		-	-	-	-	-	-	-	
		-	-		-	-	-	-	-	-	-	
		-	-		-	-	-	-	-	-	-	
		-	-		-	-	-	-	-	-	-	
		-	-		-	-	-	-	-	-	-	

**NOTES:**

---



---



---

## AOH Ltd BUILDING SURVEY REPORT

**PROPERTY: THE ROWANS**

**FLOOR: GROUND**

**BLOCK:**

**AREA SURVEYED: CUPBOARD**

REF	DESCRIPTION	Samp	Photo Ref	ANALYSIS/OBSERVATION	Quant / UOM	Prod Type	Dam	Surface Treat	Asbestos Type	Tot. Risk Ass	AOH Action Priority	FUTURE ACTION / COMMENTS
20/1	CEILING	-	-	PLASTER	-	-	-	-	-	-	-	
20/2	WALLS	-	-	BRICK / PLASTE	-	-	-	-	-	-	-	
20/3	FLOOR	-	-	CONCRETE	-	-	-	-	-	-	-	
20/4	PIPEWORK	-	-	EXPOSED AND UNLAGGED / FOAM	-	-	-	-	-	-	-	
20/5	ELECTRICAL SWITCHGEAR	-	-	MODERN	-	-	-	-	-	-	-	
		-	-		-	-	-	-	-	-	-	
		-	-		-	-	-	-	-	-	-	
		-	-		-	-	-	-	-	-	-	
		-	-		-	-	-	-	-	-	-	

**NOTES:**

## AOH Ltd BUILDING SURVEY REPORT

<b>PROPERTY: THE ROWANS</b>	<b>FLOOR: GROUND</b>	<b>BLOCK:</b>
-----------------------------	----------------------	---------------

**AREA SURVEYED: LOBBY**

REF	DESCRIPTION	Samp	Photo Ref	ANALYSIS/OBSERVATION	Quant / UOM	Prod Type	Dura	Surface Treat	Asbestos Type	Tot. Risk Ass	AOH Action Priority	FUTURE ACTION / COMMENTS
21/1	CEILING	-	-	PLASTER	-	-	-	-	-	-	-	
21/2	WALLS	-	-	BRICK / PLASTER	-	-	-	-	-	-	-	
21/3	FLOOR	-	-	CARPET / WOOD	-	-	-	-	-	-	-	
21/4	PIPEWORK	-	-	EXPOSED AND UNLAGGED	-	-	-	-	-	-	-	
21/5	BOARDS TO WALL	-	-	AS 18/5 - NONE DETECTED	-	-	-	-	-	-	-	
21/6	FIREPLACE	-	-	CERAMIC TILE / MARBLE	-	-	-	-	-	-	-	
		-	-		-	-	-	-	-	-	-	
		-	-		-	-	-	-	-	-	-	
		-	-		-	-	-	-	-	-	-	

**NOTES:**

---



---



---



## AOH Ltd BUILDING SURVEY REPORT

**PROPERTY: THE ROWANS**

**FLOOR: GROUND**

**BLOCK:**

**AREA SURVEYED: CORRIDOR**

REF	DESCRIPTION	Samp	Photo Ref	ANALYSIS/OBSERVATION	Quant / UOM	Prod Type	Date	Surface Treat	Asbestos Type	Tot. Risk Ass	AOH Action Priority	FUTURE ACTION / COMMENTS
22/1	CEILING	-	-	PLASTER	-	-	-	-	-	-	-	
22/2	WALLS	-	-	BRICK / PLASTER	-	-	-	-	-	-	-	
22/3	FLOOR	-	-	CONCRETE / CARPET	-	-	-	-	-	-	-	
22/4	PIPEWORK	-	-	EXPOSED AND UNLAGGED	-	-	-	-	-	-	-	
22/5	BOARD ABOVE DOOR	-	-	WOOD	-	-	-	-	-	-	-	
		-	-		-	-	-	-	-	-	-	
		-	-		-	-	-	-	-	-	-	
		-	-		-	-	-	-	-	-	-	
		-	-		-	-	-	-	-	-	-	

**NOTES: NO ACCESS TO INSPECT ROOF VOID.**

**SURVEYOR:**

**REPORT NO: LEC/A1/18308L**

**DATE OF INSPECTION: 19.03.08**

**PAGE 41 OF 73**

Tyneside Office Tel.No. (0191) 263 5115

Leicester Office Tel.No. (0116) 244 2504

Rotherham Office Tel.No. (01709) 876675

Chester Office Tel.No. (01244) 535300

SP2 Version April 2007

## AOH Ltd BUILDING SURVEY REPORT

**PROPERTY: THE ROWANS** **FLOOR: GROUND** **BLOCK:**

**AREA SURVEYED: OFFICE**

REF	DESCRIPTION	Samp	Photo Ref	ANALYSIS/OBSERVATION	Quant / UOM	Prod Type	Dam	Surface Treat	Asbestos Type	Tot. Risk Ass	AOH Action Priority	FUTURE ACTION / COMMENTS
23/1	CEILING	-	-		-	-	-	-	-	-	-	
23/2	WALLS	-	-		-	-	-	-	-	-	-	
23/3	FLOOR	-	-		-	-	-	-	-	-	-	
23/4	PIPEWORK	-	-		-	-	-	-	-	-	-	
		-	-		-	-	-	-	-	-	-	
		-	-		-	-	-	-	-	-	-	
		-	-		-	-	-	-	-	-	-	
		-	-		-	-	-	-	-	-	-	
		-	-		-	-	-	-	-	-	-	

**NOTES: NO ACCESS TO INSPECT. IN USE AT TIME OF SURVEY.**

## AOH Ltd BUILDING SURVEY REPORT

**PROPERTY: THE ROWANS**

**FLOOR: GROUND**

**BLOCK:**

**AREA SURVEYED: MAIN HALL INCLUDING BALCONY**

REF	DESCRIPTION	Samp	Photo Ref	ANALYSIS/OBSERVATION	Quant / UOM	Prod Type	Dam	Surface Treat	Asbestos Type	Tot. Rak Ass	AOH Action Priority	FUTURE ACTION / COMMENTS
24/1	CEILING	-	-	WOOD	-	-	-	-	-	-	-	
24/2	WALLS	-	-	BRICK / WOOD	-	-	-	-	-	-	-	
24/3	FLOOR	-	-	WOOD	-	-	-	-	-	-	-	
24/4	PIPEWORK	-	-	EXPOSED AND UNLAGGED	-	-	-	-	-	-	-	
24/5	STAIR NOSING	-	-	MODERN	-	-	-	-	-	-	-	
24/6	BOXING BELOW BALCONY WINDOW	-	-	WOOD - NO ACCESS TO INSPECT	-	-	-	-	-	-	-	
24/7	BOARDS TO FIRE DOORS	-	-	FIBRE BOARD	-	-	-	-	-	-	-	
		-	-		-	-	-	-	-	-	-	
		-	-		-	-	-	-	-	-	-	

**NOTES:**

**SURVEYOR:**

**REPORT NO:** LEC/A1/18308L

**DATE OF INSPECTION:** 19.03.08

**PAGE 43 OF 73**

Tyneside Office Tel.No. (0191) 263 5115

Leicester Office Tel.No. (0116) 244 2504

Rotherham Office Tel.No. (01709) 876675

Chester Office Tel.No. (01244) 535300

SP2 Version April 2007

## AOH Ltd BUILDING SURVEY REPORT

**PROPERTY: THE ROWANS** **FLOOR: GROUND** **BLOCK:**

**AREA SURVEYED: CORRIDOR**

REF	DESCRIPTION	Samp	Photo Ref	ANALYSIS/OBSERVATION	Quant / UOM	Prod Type	Dam	Surface Treat	Asbestos Type	Tot. Risk Ass	AOH Action Priority	FUTURE ACTION / COMMENTS
25/1	CEILING	-	-	PLASTER	-	-	-	-	-	-	-	
25/2	WALLS	-	-	BRICK / PLASTER	-	-	-	-	-	-	-	
25/3	FLOOR	-	-	CARPET / WOOD	-	-	-	-	-	-	-	
25/4	PIPEWORK	-	-	EXPOSED AND UNLAGGED / FOAM	-	-	-	-	-	-	-	
25/5	BOARDS TO DOORS	-	-	WOOD	-	-	-	-	-	-	-	
25/6	ELECTRICAL SWITCHGEAR	-	-	MODERN	-	-	-	-	-	-	-	
		-	-		-	-	-	-	-	-	-	
		-	-		-	-	-	-	-	-	-	
		-	-		-	-	-	-	-	-	-	

**NOTES:**

## AOH Ltd BUILDING SURVEY REPORT

**PROPERTY: THE ROWANS**

**FLOOR: GROUND**

**BLOCK:**

**AREA SURVEYED: OFFICE**

REF	DESCRIPTION	Samp	Photo Ref	ANALYSIS/OBSERVATION	Quant / UOM	Prod Type	Dam	Surface Treat	Asbestos Type	Tot. Risk Ass	AOH Action Priority	FUTURE ACTION / COMMENTS
26/1	CEILING	-	-	PLASTER	-	-	-	-	-	-	-	
26/2	WALLS	-	-	BRICK / PLASTER	-	-	-	-	-	-	-	
26/3	FLOOR	-	-	CARPET / WOOD	-	-	-	-	-	-	-	
26/4	PIPEWORK	-	-	EXPOSED AND UNLAGGED	-	-	-	-	-	-	-	
26/5	ELECTRICAL SWITCHGEAR	-	-	MODERN	-	-	-	-	-	-	-	
		-	-		-	-	-	-	-	-	-	
		-	-		-	-	-	-	-	-	-	
		-	-		-	-	-	-	-	-	-	
		-	-		-	-	-	-	-	-	-	

**NOTES: NO ACCESS TO INSPECT ROOF VOID.**

**SURVEYOR:**

**REPORT NO: LEC/A1/18308L**

**DATE OF INSPECTION: 19.03.08**

**PAGE 45 OF 73**

Tyneside Office Tel.No. (0191) 263 5115

Leicester Office Tel.No. (0116) 244 2504

Rotherham Office Tel.No. (01709) 876675

Chester Office Tel.No. (01244) 535300

SF2 Version April 2007

## AOH Ltd BUILDING SURVEY REPORT

**PROPERTY: THE ROWANS** **FLOOR: GROUND** **BLOCK:**

**AREA SURVEYED: KITCHEN**

REF	DESCRIPTION	Samp	Photo Ref	ANALYSIS/OBSERVATION	Quant / UOM	Prod Type	Dam	Surface Treat	Asbestos Type	Tot. Risk Ass	AOH Action Priority	FUTURE ACTION / COMMENTS
27/1	CEILING	-	-	PLASTER	-	-	-	-	-	-	-	
27/2	WALLS	-	-	BRICK / PLASTER / CERAMIC TILE	-	-	-	-	-	-	-	
27/3	FLOOR	-	-	WOOD / NON SLIP	-	-	-	-	-	-	-	
27/4	PIPEWORK	-	-	EXPOSED AND UNLAGGED	-	-	-	-	-	-	-	
27/5	BOXING	-	-	WOOD - NO ACCESS TO INSPECT	-	-	-	-	-	-	-	
27/6	WATER HEATER	-	-	MODERN	-	-	-	-	-	-	-	
27/7	PAD TO SINK	-	-	AS 16/5 - NONE DETECTED	-	-	-	-	-	-	-	
		-	-		-	-	-	-	-	-	-	
		-	-		-	-	-	-	-	-	-	

**NOTES:**

## AOH Ltd BUILDING SURVEY REPORT

**PROPERTY: THE ROWANS**

**FLOOR: GROUND**

**BLOCK:**

**AREA SURVEYED: DINING AREA**

REF	DESCRIPTION	Samp	Photo Ref	ANALYSIS/OBSERVATION	Quant / UOM	Prod Type	Diam	Surface Treat	Asbestos Type	Tot. Risk Ass	AOH Action Priority	FUTURE ACTION / COMMENTS
28/1	CEILING	-	-	PLASTER	-	-	-	-	-	-	-	
28/2	WALLS	-	-	BRICK / PLASTER / CERAMIC TILE	-	-	-	-	-	-	-	
28/3	FLOOR	-	-	WOOD / NON SLIP	-	-	-	-	-	-	-	
28/4	PIPEWORK	-	-	EXPOSED AND UNLAGGED	-	-	-	-	-	-	-	
28/5	WATER HEATER	-	-	MODERN	-	-	-	-	-	-	-	
28/6	PAD TO SINK	-	-	AS 16/5 - NONE DETECTED	-	-	-	-	-	-	-	
		-	-		-	-	-	-	-	-	-	
		-	-		-	-	-	-	-	-	-	
		-	-		-	-	-	-	-	-	-	

**NOTES: NO ACCESS TO INSPECT FLOOR VOID.**

**SURVEYOR:**

**REPORT NO:** LEC/A1/18308L

**DATE OF INSPECTION:** 19.03.08

**PAGE 47 OF 73**

Tyneside Office Tel.No. (0191) 263 5115

Leicester Office Tel.No. (0116) 244 2504

Rotherham Office Tel.No. (01709) 876675

Chester Office Tel.No. (01244) 535300

SP2 Version April 2007

## AOH Ltd BUILDING SURVEY REPORT

**PROPERTY: THE ROWANS**

**FLOOR: GROUND**

**BLOCK:**

**AREA SURVEYED: DISABLED W.C.**

REF	DESCRIPTION	Samp	Photo Ref	ANALYSIS/OBSERVATION	Quant / UOM	Prod Type	Dam	Surface Treat	Asbestos Type	Tot. Risk Ass	AOH Action Priority	FUTURE ACTION / COMMENTS
29/1	CEILING	-	-	PLASTER	-	-	-	-	-	-	-	
29/2	WALLS	-	-	BRICK / PLASTER / CERAMIC TILE	-	-	-	-	-	-	-	
29/3	FLOOR	-	-	WOOD / NON SLIP	-	-	-	-	-	-	-	
29/4	PIPEWORK	-	-	EXPOSED AND UNLAGGED	-	-	-	-	-	-	-	
29/5	CISTERN	-	-	CERAMIC	-	-	-	-	-	-	-	
29/6	BOXING	-	-	WOOD - NO ACCESS TO INSPECT	-	-	-	-	-	-	-	
		-	-		-	-	-	-	-	-	-	
		-	-		-	-	-	-	-	-	-	
		-	-		-	-	-	-	-	-	-	

**NOTES:**

**SURVEYOR:**

**REPORT NO:** LEC/A1/18308L

**DATE OF INSPECTION:** 19.03.08

**PAGE 48 OF 73**

SF2 Version April 2007

Tyneside Office Tel.No. (0191) 263 5115

Leicester Office Tel.No. (0116) 244 2504

Rotherham Office Tel.No. (01709) 876675

Chester Office Tel.No. (01244) 535300



## AOH Ltd BUILDING SURVEY REPORT

**PROPERTY: THE ROWANS**

**FLOOR: GROUND**

**BLOCK:**

**AREA SURVEYED: LADIES W.C.**

REF	DESCRIPTION	Samp	Photo Ref	ANALYSIS/OBSERVATION	Quant / UOM	Prod Type	Dam	Surface Treat	Asbestos Type	Tot. Risk Ass	AOH Action Priority	FUTURE ACTION / COMMENTS
30/1	CEILING	-	-	PLASTER	-	-	-	-	-	-	-	
30/2	WALLS	-	-	BRICK / CERAMIC TILE	-	-	-	-	-	-	-	
30/3	FLOOR	-	-	CONCRETE / WOOD	-	-	-	-	-	-	-	
30/4	PIPEWORK	-	-	EXPOSED AND UNLAGGED	-	-	-	-	-	-	-	
30/5	CISTERN	-	-	CERAMIC	-	-	-	-	-	-	-	
		-	-		-	-	-	-	-	-	-	
		-	-		-	-	-	-	-	-	-	
		-	-		-	-	-	-	-	-	-	
		-	-		-	-	-	-	-	-	-	

**NOTES:**

**SURVEYOR:**

**REPORT NO:** LEC/A1/18308L

**DATE OF INSPECTION:** 19.03.08

**PAGE 49 OF 73**

Tyneside Office Tel.No. (0191) 263 5115

Leicester Office Tel.No. (0116) 244 2504

Rotherham Office Tel.No. (01709) 876675

Chester Office Tel.No. (01244) 535300

SP2 Version April 2007

## AOH Ltd BUILDING SURVEY REPORT

**PROPERTY: THE ROWANS**

**FLOOR: GROUND**

**BLOCK:**

**AREA SURVEYED: CORRIDOR**

REF	DESCRIPTION	Samp	Photo Ref	ANALYSIS/OBSERVATION	Quant / UOM	Prod Type	Dam	Surface Treat	Asbestos Type	Tot. Risk Ass	AOH Action Priority	FUTURE ACTION / COMMENTS
31/1	CEILING	-	-	PLASTER	-	-	-	-	-	-	-	
31/2	WALLS	-	-	BRICK / PLASTER	-	-	-	-	-	-	-	
31/3	FLOOR	-	-	CONCRETE	-	-	-	-	-	-	-	
31/4	PIPEWORK	-	-	NOT APPLICABLE	-	-	-	-	-	-	-	
		-	-		-	-	-	-	-	-	-	
		-	-		-	-	-	-	-	-	-	
		-	-		-	-	-	-	-	-	-	
		-	-		-	-	-	-	-	-	-	
		-	-		-	-	-	-	-	-	-	

**NOTES:**

## AOH Ltd BUILDING SURVEY REPORT

**PROPERTY: THE ROWANS**

**FLOOR: GROUND**

**BLOCK:**

**AREA SURVEYED: CORRIDOR**

REF	DESCRIPTION	Samp	Photo Ref	ANALYSIS/OBSERVATION	Quant / UOM	Prod Type	Dem	Surface Treat	Asbestos Type	Tot. Risk Ass	AOH Action Priority	FUTURE ACTION / COMMENTS
32/1	CEILING	-	-	PLASTER	-	-	-	-	-	-	-	
32/2	WALLS	-	-	BRICK / PLASTER	-	-	-	-	-	-	-	
32/3	FLOOR	-	-	CONCRETE	-	-	-	-	-	-	-	
32/4	PIPEWORK	-	-	EXPOSED AND UNLAGGED / FOAM	-	-	-	-	-	-	-	
32/5	BOARD BESIDE DOOR	-	-	WOOD	-	-	-	-	-	-	-	
		-	-		-	-	-	-	-	-	-	
		-	-		-	-	-	-	-	-	-	
		-	-		-	-	-	-	-	-	-	
		-	-		-	-	-	-	-	-	-	

**NOTES:**


## AOH Ltd BUILDING SURVEY REPORT

**PROPERTY: THE ROWANS** **FLOOR: GROUND** **BLOCK:**

**AREA SURVEYED: STAIRS**

REF	DESCRIPTION	Samp	Photo Ref	ANALYSIS/OBSERVATION	Quant / UOM	Prod Type	Dam	Surface Treat	Asbestos Type	Tot. Risk Ass	AOH Action Priority	FUTURE ACTION / COMMENTS
33/1	CEILING	-	-	PLASTER	-	-	-	-	-	-	-	
33/2	WALLS	-	-	BRICK / PLASTER	-	-	-	-	-	-	-	
33/3	FLOOR	-	-	CONCRETE / WOOD	-	-	-	-	-	-	-	
33/4	PIPEWORK	-	-	EXPOSED AND UNLAGGED / FOAM	-	-	-	-	-	-	-	
		-	-		-	-	-	-	-	-	-	
		-	-		-	-	-	-	-	-	-	
		-	-		-	-	-	-	-	-	-	
		-	-		-	-	-	-	-	-	-	
		-	-		-	-	-	-	-	-	-	

**NOTES:**

---



---



---

## AOH Ltd BUILDING SURVEY REPORT

**PROPERTY: THE ROWANS**

**FLOOR: GROUND**

**BLOCK:**

**AREA SURVEYED: CORRIDOR**

REF	DESCRIPTION	Samp	Photo Ref	ANALYSIS/OBSERVATION	Quant / UOM	Prod Type	Dam	Surface Treat	Asbestos Type	Tot. Risk Ass	AOH Action Priority	FUTURE ACTION / COMMENTS
34/1	CEILING	-	-	PLASTER	-	-	-	-	-	-	-	
34/2	WALLS	-	-	BRICK / PLASTER	-	-	-	-	-	-	-	
34/3	FLOOR	-	-	WOOD	-	-	-	-	-	-	-	
34/4	PIPEWORK	-	-	EXPOSED AND UNLAGGED / FOAM	-	-	-	-	-	-	-	
34/5	ELECTRICAL SWITCHGEAR	-	-	MODERN	-	-	-	-	-	-	-	
		-	-		-	-	-	-	-	-	-	
		-	-		-	-	-	-	-	-	-	
		-	-		-	-	-	-	-	-	-	
		-	-		-	-	-	-	-	-	-	

**NOTES:**

## AOH Ltd BUILDING SURVEY REPORT

**PROPERTY: THE ROWANS** **FLOOR: GROUND** **BLOCK:**

**AREA SURVEYED: ROOM**

REF	DESCRIPTION	Samp	Photo Ref	ANALYSIS/OBSERVATION	Quant / UOM	Prod Type	Dam	Surface Treat	Asbestos Type	Tot. Risk Ass	AOH Action Priority	FUTURE ACTION / COMMENTS
35/1	CEILING	-	-	PLASTER	-	-	-	-	-	-	-	
35/2	WALLS	-	-	BRICK / PLASTER / WOOD / CERAMIC TILE	-	-	-	-	-	-	-	
35/3	FLOOR	-	-	CARPET / NON SLIP	-	-	-	-	-	-	-	
35/4	PIPEWORK	-	-	EXPOSED AND UNLAGGED	-	-	-	-	-	-	-	
		-	-		-	-	-	-	-	-	-	
		-	-		-	-	-	-	-	-	-	
		-	-		-	-	-	-	-	-	-	
		-	-		-	-	-	-	-	-	-	
		-	-		-	-	-	-	-	-	-	

**NOTES:**

---



---

# AOH Ltd BUILDING SURVEY REPORT

**PROPERTY: THE ROWANS**

**FLOOR: GROUND**

**BLOCK:**

**AREA SURVEYED: ANNEX OFFICES**

REF	DESCRIPTION	Snmp	Photo Ref	ANALYSIS/OBSERVATION	Quant / UCM	Prod Type	Dem	Surface Treat	Asbestos Type	Tot. Risk Asa	AOH Action Priority	FUTURE ACTION / COMMENTS
37/1	CEILING	-	-	PLASTER	-	-	-	-	-	-	-	
37/2	WALLS	-	-	BRICK / PLASTER	-	-	-	-	-	-	-	
37/3	FLOOR	-	-	CARPET	-	-	-	-	-	-	-	
37/4	PIPEWORK	-	-	EXPOSED AND UNLAGGED / FOAM	-	-	-	-	-	-	-	
37/5	BOARD ABOVE DOOR	✓ 85753	-	NONE DETECTED	-	-	-	-	-	-	-	UNLABELLED
37/6	ELECTRICAL SWITCHGEAR	-	-	MODERN	-	-	-	-	-	-	-	
37/7	BOARDS TO SKYLIGHT	-	-	WOOD	-	-	-	-	-	-	-	
		-	-		-	-	-	-	-	-	-	
		-	-		-	-	-	-	-	-	-	

**NOTES:**

## AOH Ltd BUILDING SURVEY REPORT

**PROPERTY: THE ROWANS**

**FLOOR: GROUND**

**BLOCK:**

**AREA SURVEYED: LOBBY**

REF	DESCRIPTION	Samp	Photo Ref	ANALYSIS/OBSERVATION	Quant / UOM	Prod Type	Dam	Surface Treat	Asbestos Type	Tot. Risk Ass	AOH Action Priority	FUTURE ACTION / COMMENTS
38/1	CEILING	-	-	PLASTER	-	-	-	-	-	-	-	
38/2	WALLS	-	-	BRICK / PLASTER	-	-	-	-	-	-	-	
38/3	FLOOR	-	-	NON SLIP	-	-	-	-	-	-	-	
38/4	PIPEWORK	-	-	EXPOSED AND UNLAGGED / FOAM	-	-	-	-	-	-	-	
38/5	BOXING	-	-	WOOD - NO ACCESS TO INSPECT	-	-	-	-	-	-	-	
		-	-		-	-	-	-	-	-	-	
		-	-		-	-	-	-	-	-	-	
		-	-		-	-	-	-	-	-	-	
		-	-		-	-	-	-	-	-	-	

**NOTES:**



## AOH Ltd BUILDING SURVEY REPORT

**PROPERTY: THE ROWANS**

**FLOOR: GROUND**

**BLOCK:**

**AREA SURVEYED: W.C.**

REF	DESCRIPTION	Samp	Photo Ref	ANALYSIS/OBSERVATION	Quant / UOM	Prod Type	Dam	Surface Treat	Asbestos Type	Tot. Risk Ass	AOH Action Priority	FUTURE ACTION / COMMENTS
39/1	CEILING	-	-	PLASTER	-	-	-	-	-	-	-	
39/2	WALLS	-	-	BRICK / PLASTER / CERAMIC TILE	-	-	-	-	-	-	-	
39/3	FLOOR	-	-	NON SLIP	-	-	-	-	-	-	-	
39/4	PIPEWORK	-	-	EXPOSED AND UNLAGGED	-	-	-	-	-	-	-	
39/5	CISTERN	-	-	CERAMIC	-	-	-	-	-	-	-	
		-	-		-	-	-	-	-	-	-	
		-	-		-	-	-	-	-	-	-	
		-	-		-	-	-	-	-	-	-	
		-	-		-	-	-	-	-	-	-	

**NOTES:**

## AOH Ltd BUILDING SURVEY REPORT

**PROPERTY: THE ROWANS**

**FLOOR: GROUND**

**BLOCK:**

**AREA SURVEYED: W.C.**

REF	DESCRIPTION	Samp	Photo Ref	ANALYSIS/OBSERVATION	Quant / UOM	Prod Type	Dam	Surface Treat	Asbestos Type	Tot. Risk Ass	AOH Action Priority	FUTURE ACTION / COMMENTS
40/1	CEILING	-	-	PLASTER	-	-	-	-	-	-	-	
40/2	WALLS	-	-	BRICK / PLASTER / CERAMIC TILE	-	-	-	-	-	-	-	
40/3	FLOOR	-	-	NON SLIP	-	-	-	-	-	-	-	
40/4	PIPEWORK	-	-	EXPOSED AND UNLAGGED / FOAM	-	-	-	-	-	-	-	
40/5	BOXING	-	-	WOOD - NO ACCESS TO INSPECT	-	-	-	-	-	-	-	
40/6	CISTERN	-	-	CERAMIC	-	-	-	-	-	-	-	
		-	-		-	-	-	-	-	-	-	
		-	-		-	-	-	-	-	-	-	
		-	-		-	-	-	-	-	-	-	

**NOTES:**

## AOH Ltd BUILDING SURVEY REPORT

**PROPERTY: THE ROWANS**

**FLOOR: GROUND**

**BLOCK:**

**AREA SURVEYED: COMMS ROOM**

REF	DESCRIPTION	Samp	Photo Ref	ANALYSIS/OBSERVATION	Quant / UOM	Prod Type	Dens	Surface Treat	Asbestos Type	Tot. Risk Ass	AOH Action Priority	FUTURE ACTION / COMMENTS
41/1	CEILING	-	-	PLASTER	-	-	-	-	-	-	-	
41/2	WALLS	-	-	BRICK / PLASTER	-	-	-	-	-	-	-	
41/3	FLOOR	-	-	WOOD	-	-	-	-	-	-	-	
41/4	PIPEWORK	-	-	EXPOSED AND UNLAGGED	-	-	-	-	-	-	-	
41/5	BOARDS TO SKYLIGHT	-	-	PLASTER	-	-	-	-	-	-	-	
		-	-		-	-	-	-	-	-	-	
		-	-		-	-	-	-	-	-	-	
		-	-		-	-	-	-	-	-	-	
		-	-		-	-	-	-	-	-	-	

**NOTES:**

## AOH Ltd BUILDING SURVEY REPORT

**PROPERTY: THE ROWANS** **FLOOR: GROUND** **BLOCK:**

**AREA SURVEYED: KITCHEN**

REF	DESCRIPTION	Samp	Photo Ref	ANALYSIS/OBSERVATION	Quant / UOM	Prod Type	Dem	Surface Treat	Asbestos Type	Tot. Risk Ass	AOH Action Priority	FUTURE ACTION / COMMENTS
42/1	CEILING	-	-	PLASTER	-	-	-	-	-	-	-	
42/2	WALLS	-	-	BRICK / PLASTER / CERAMIC TILE	-	-	-	-	-	-	-	
42/3	FLOOR	-	-	NON SLIP	-	-	-	-	-	-	-	
42/4	PIPEWORK	-	-	EXPOSED AND UNLAGGED	-	-	-	-	-	-	-	
42/5	BOARDS TO WALL	-	-	WOOD / FIBRE BOARD	-	-	-	-	-	-	-	
42/6	PAD TO SINK	-	-	AS 16/5 - NONE DETECTED	-	-	-	-	-	-	-	
42/7	WATER HEATER	-	-	MODERN	-	-	-	-	-	-	-	
		-	-		-	-	-	-	-	-	-	
		-	-		-	-	-	-	-	-	-	

**NOTES:**

---



---



---

## AOH Ltd BUILDING SURVEY REPORT

**PROPERTY: THE ROWANS**

**FLOOR: GROUND**

**BLOCK:**

**AREA SURVEYED: CUPBOARD**

REF	DESCRIPTION	Samp	Photo Ref	ANALYSIS/OBSERVATION	Quant / UOM	Prod Type	Dam	Surface Treat	Asbestos Type	Tot. Risk Ass	AOH Action Priority	FUTURE ACTION / COMMENTS
43/1	CEILING	-	-	NO ACCESS TO INSPECT	-	-	-	-	-	-	-	
43/2	WALLS	-	-	BRICK / PLASTER	-	-	-	-	-	-	-	
43/3	FLOOR	-	-	QUARRY TILE	-	-	-	-	-	-	-	
43/4	PIPEWORK	-	-	EXPOSED AND UNLAGGED	-	-	-	-	-	-	-	
43/5	BOARDS TO WALL	-	-	FIBRE BOARD / WOOD	-	-	-	-	-	-	-	
		-	-		-	-	-	-	-	-	-	
		-	-		-	-	-	-	-	-	-	
		-	-		-	-	-	-	-	-	-	
		-	-		-	-	-	-	-	-	-	

**NOTES: NO ACCESS TO INSPECT CEILING - COULD BE WOOD OR AS 37/5 - NONE DETECTED. BEHIND WOODEN BOARD ABOVE DOOR ASBESTOS DEBRIS MAY BE PRESENT.**

# AOH Ltd BUILDING SURVEY REPORT

**PROPERTY: THE ROWANS**

**FLOOR: GROUND**

**BLOCK:**

**AREA SURVEYED: CORRIDOR**

REF	DESCRIPTION	Samp	Photo Ref	ANALYSIS/OBSERVATION	Quant / UOM	Prod Type	Dam	Surface Treat	Asbestos Type	Tot. Risk Ass	AOH Action Priority	FUTURE ACTION / COMMENTS
44/1	CEILING	-	-	PLASTER	-	-	-	-	-	-	-	
44/2	WALLS	-	-	BRICK / PLASTER	-	-	-	-	-	-	-	
44/3	FLOOR	-	-	CONCRETE	-	-	-	-	-	-	-	
44/4	PIPEWORK	-	-	EXPOSED AND UNLAGGED / FOAM	-	-	-	-	-	-	-	
44/5	BOXING	-	-	WOOD - NO ACCESS TO INSPECT	-	-	-	-	-	-	-	
		-	-		-	-	-	-	-	-	-	
		-	-		-	-	-	-	-	-	-	
		-	-		-	-	-	-	-	-	-	
		-	-		-	-	-	-	-	-	-	

**NOTES: NO ACCESS TO INSPECT FLOOR VOID.**

**SURVEYOR:**

**REPORT NO: LEC/A1/18308L**

**DATE OF INSPECTION: 19.03.08**

**PAGE 62 OF 73**

SF2 Version April 2007

Tyneside Office Tel.No. (0191) 263 5115

Leicester Office Tel.No. (0116) 244 2504

Rotherham Office Tel.No. (01709) 876675

Chester Office Tel.No. (01244) 535300

## AOH Ltd BUILDING SURVEY REPORT

**PROPERTY: THE ROWANS**

**FLOOR: GROUND/FIRST**

**BLOCK:**

**AREA SURVEYED: STAIRWELL**

REF	DESCRIPTION	Samp	Photo Ref	ANALYSIS/OBSERVATION	Quant / UOM	Prod Type	Dam	Surface Treat	Asbestos Type	Tot. Risk Ass	AOH Action Priority	FUTURE ACTION / COMMENTS
45/1	CEILING	-	-	PLASTER	-	-	-	-	-	-	-	
45/2	WALLS	-	-	BRICK / PLASTER	-	-	-	-	-	-	-	
45/3	FLOOR	-	-	CARPET / WOOD / QUARRY TILE	-	-	-	-	-	-	-	
45/4	PIPEWORK	-	-	EXPOSED AND UNLAGGED	-	-	-	-	-	-	-	
45/5	ELECTRICAL SWITCHGEAR	-	-	MODERN	-	-	-	-	-	-	-	
45/6	BOARDS TO DOORS	-	-	FIBRE BOARD	-	-	-	-	-	-	-	
45/7	STAIR NOSING	-	-	MODERN	-	-	-	-	-	-	-	
		-	-		-	-	-	-	-	-	-	
		-	-		-	-	-	-	-	-	-	

**NOTES:**

## AOH Ltd BUILDING SURVEY REPORT

**PROPERTY: THE ROWANS**

**FLOOR: GROUND**

**BLOCK:**

**AREA SURVEYED: MALE W.C.**

REF	DESCRIPTION	Samp	Photo Ref	ANALYSIS/OBSERVATION	Quant / UOM	Prod Type	Dam	Surface Treat	Asbestos Type	Tot. Risk Ass	AOH Action Priority	FUTURE ACTION / COMMENTS
46/1	CEILING	-	-	PLASTER	-	-	-	-	-	-	-	
46/2	WALLS	-	-	BRICK / PLASTER / CERAMIC TILE	-	-	-	-	-	-	-	
46/3	FLOOR	-	-	QUARRY TILE	-	-	-	-	-	-	-	
46/4	PIPEWORK	-	-	EXPOSED AND UNLAGGED	-	-	-	-	-	-	-	
46/5	CISTERN	-	-	CERAMIC TILE	-	-	-	-	-	-	-	
46/6	BOARD TO CEILING	-	-	WOOD	-	-	-	-	-	-	-	
		-	-		-	-	-	-	-	-	-	
		-	-		-	-	-	-	-	-	-	
		-	-		-	-	-	-	-	-	-	

**NOTES:**



## AOH Ltd BUILDING SURVEY REPORT

**PROPERTY: THE ROWANS**

**FLOOR: GROUND**

**BLOCK:**

**AREA SURVEYED: LADIES W.C. / LAUNDRY**

REF	DESCRIPTION	Samp	Photo Ref	ANALYSIS/OBSERVATION	Quant / UOM	Prod Type	Dam	Surface Treat	Asbestos Type	Tot. Risk Ass	AOH Action Priority	FUTURE ACTION / COMMENTS
47/1	CEILING	-	-	CONCRETE	-	-	-	-	-	-	-	
47/2	WALLS	-	-	BRICK / CERAMIC TILE	-	-	-	-	-	-	-	
47/6	FLOOR	-	-	QUARRY TILE	-	-	-	-	-	-	-	
47/4	PIPEWORK	-	-	EXPOSED AND UNLAGGED	-	-	-	-	-	-	-	
47/5	CISTERN	-	-	PLASTIC	-	-	-	-	-	-	-	
47/6	WATER HEATER	-	-	MODERN	-	-	-	-	-	-	-	
		-	-		-	-	-	-	-	-	-	
		-	-		-	-	-	-	-	-	-	
		-	-		-	-	-	-	-	-	-	

**NOTES:**

## AOH Ltd BUILDING SURVEY REPORT

**PROPERTY: THE ROWANS**

**FLOOR: GROUND**

**BLOCK:**

**AREA SURVEYED: CUPBOARDS UNDER STAIRS**

REF	DESCRIPTION	Samp	Photo Ref	ANALYSIS/OBSERVATION	Quant / UOM	Prod Type	Dem	Surface Treat	Asbestos Type	Tot. Risk Ass	AOH Action Priority	FUTURE ACTION / COMMENTS
48/1	CEILING	-	-	WOOD	-	-	-	-	-	-	-	
48/2	WALLS	-	-	BRICK	-	-	-	-	-	-	-	
48/3	FLOOR	-	-	CONCRETE	-	-	-	-	-	-	-	
48/4	PIPEWORK	-	-	NOT APPLICABLE	-	-	-	-	-	-	-	
		-	-		-	-	-	-	-	-	-	
		-	-		-	-	-	-	-	-	-	
		-	-		-	-	-	-	-	-	-	
		-	-		-	-	-	-	-	-	-	
		-	-		-	-	-	-	-	-	-	

**NOTES:**

SURVEYOR:

REPORT NO: LEC/A1/18308L

DATE OF INSPECTION: 19.03.08

PAGE 66 OF 73

Tyneside Office Tel.No. (0191) 263 5115

Leicester Office Tel.No. (0116) 244 2504

Rotherham Office Tel.No. (01709) 876675

Chester Office Tel.No. (01244) 535300

SP2 Version April 2007

## AOH Ltd BUILDING SURVEY REPORT

**PROPERTY: THE ROWANS**

**FLOOR: GROUND**

**BLOCK:**

**AREA SURVEYED: TOILET / LOBBY**

REF	DESCRIPTION	Samp	Photo Ref	ANALYSIS/OBSERVATION	Quant / UOM	Prod Type	Dam	Surface Treat	Asbestos Type	Tot. Risk Ass	AOH Action Priority	FUTURE ACTION / COMMENTS
49/1	CEILING	-	-	PLASTER	-	-	-	-	-	-	-	
49/2	WALLS	-	-	BRICK / PLASTER / CERAMIC TILE	-	-	-	-	-	-	-	
49/3	FLOOR	-	-	WOOD / NON SLIP	-	-	-	-	-	-	-	
49/4	PIPEWORK	-	-	EXPOSED AND UNLAGGED / FOAM	-	-	-	-	-	-	-	
49/5	CISTERN	-	-	CERAMIC	-	-	-	-	-	-	-	
49/6	BOXING	-	-	WOOD - NO ACCESS TO INSPECT	-	-	-	-	-	-	-	
49/7	BOARD TO WALL	-	-	WOOD	-	-	-	-	-	-	-	
49/8	ELECTRICAL SWITCHGEAR	-	-	MODERN	-	-	-	-	-	-	-	
49/9	BOARD TO WALL BEHIND TAPS	-	-	WOOD	-	-	-	-	-	-	-	

**NOTES:**

# AOH Ltd BUILDING SURVEY REPORT

**PROPERTY: THE ROWANS** **FLOOR: GROUND** **BLOCK:**

**AREA SURVEYED: EXTERNAL**

REF	DESCRIPTION	Samp	Photo Ref	ANALYSIS/OBSERVATION	Quant / UOM	Prod Type	Dam	Surface Treat	Asbestos Type	Tot. Risk Ass	AOH Action Priority	FUTURE ACTION / COMMENTS
50/1	ROOF	-	-	TILES	-	-	-	-	-	-	-	
50/2	WALLS	-	-	BRICK	-	-	-	-	-	-	-	
50/3	FLOOR	-	-	CONCRETE	-	-	-	-	-	-	-	
50/4	DRAINS / GUTTERS	-	-	EXPOSED AND UNLAGGED	-	-	-	-	-	-	-	
50/5	SOFFITS / FASCIAS	-	-	WOOD	-	-	-	-	-	-	-	WHERE ACCESSED
50/6	EXTERNAL PORCH	-	-	PLASTER	-	-	-	-	-	-	-	
		-	-		-	-	-	-	-	-	-	
		-	-		-	-	-	-	-	-	-	
		-	-		-	-	-	-	-	-	-	

**NOTES:**

---



---



---

## AOH Ltd BUILDING SURVEY REPORT

**PROPERTY: THE ROWANS**

**FLOOR: GROUND**

**BLOCK:**

**AREA SURVEYED: BOILER HOUSE**

REF	DESCRIPTION	Samp	Photo Ref	ANALYSIS/OBSERVATION	Quant / UOM	Prod Type	Date	Surface Treat	Asbestos Type	Tot. Risk Ass	AOH Action Priority	FUTURE ACTION / COMMENTS
51/1	CEILING	-	-	CONCRETE	-	-	-	-	-	-	-	
51/2	WALLS	-	-	BRICK	-	-	-	-	-	-	-	
51/3	FLOOR	-	-	CONCRETE	-	-	-	-	-	-	-	
51/4	PIPEWORK	-	-	EXPOSED AND UNLAGGED / ALUMINIUM CLADDING	-	-	-	-	-	-	-	
51/5	REDUNDANT BOARDS	✓ 85754	-	NONE DETECTED	-	-	-	-	-	-	-	
51/6	BOILER	-	-	MAY CONTAIN CONCEALED ASBESTOS	-	-	-	-	-	-	-	
		-	-		-	-	-	-	-	-	-	
		-	-		-	-	-	-	-	-	-	
		-	-		-	-	-	-	-	-	-	

**NOTES:**

---



---



---

## AOH Ltd BUILDING SURVEY REPORT

**PROPERTY: THE ROWANS**

**FLOOR:**

**BLOCK:**

**AREA SURVEYED: UNDERCROFT**

REF	DESCRIPTION	Sampl	Photo Ref	ANALYSIS/OBSERVATION	Quant / UOM	Prod Type	Dam	Surface Treat	Asbestos Type	Tot. Risk Ass	AOH Action Priority	FUTURE ACTION / COMMENTS
52/1	CEILING	-	-		-	-	-	-	-	-	-	
52/2	WALLS	-	-		-	-	-	-	-	-	-	
52/3	FLOOR	-	-		-	-	-	-	-	-	-	
52/4	PIPEWORK	-	-		-	-	-	-	-	-	-	
		-	-		-	-	-	-	-	-	-	
		-	-		-	-	-	-	-	-	-	
		-	-		-	-	-	-	-	-	-	
		-	-		-	-	-	-	-	-	-	
		-	-		-	-	-	-	-	-	-	

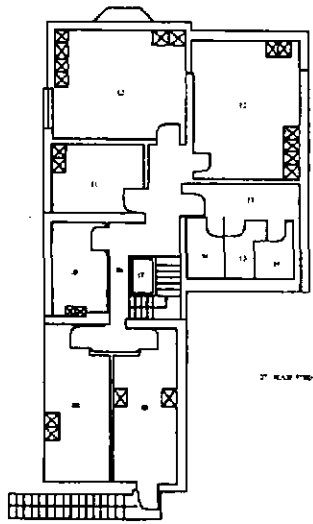
**NOTES: LIMITED ACCESS TO INSPECT - CONFINED SPACE.**

---

**PLANS**

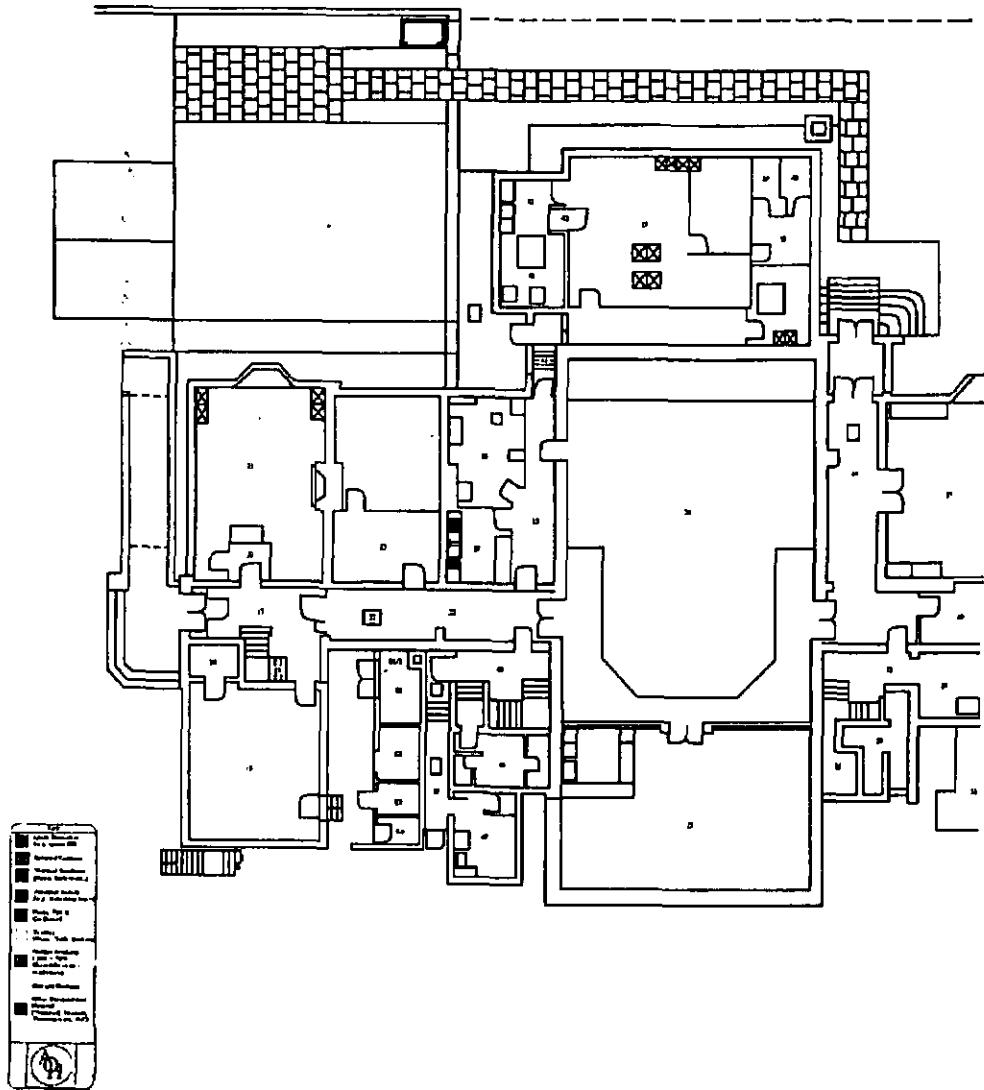
**PLANS ARE ATTACHED TO THIS REPORT**

	Room 101
	Room 102
	Room 103
	Room 104
	Room 105
	Room 106
	Room 107
	Room 108
	Room 109
	Room 110
	Room 111
	Room 112
	Room 113
	Room 114
	Room 115
	Room 116
	Room 117
	Room 118
	Room 119
	Room 120
	Room 121
	Room 122
	Room 123
	Room 124
	Room 125
	Room 126
	Room 127
	Room 128
	Room 129
	Room 130
	Room 131
	Room 132
	Room 133
	Room 134
	Room 135
	Room 136
	Room 137
	Room 138
	Room 139
	Room 140
	Room 141
	Room 142
	Room 143
	Room 144
	Room 145
	Room 146
	Room 147
	Room 148
	Room 149
	Room 150
	Room 151
	Room 152
	Room 153
	Room 154
	Room 155
	Room 156
	Room 157
	Room 158
	Room 159
	Room 160
	Room 161
	Room 162
	Room 163
	Room 164
	Room 165
	Room 166
	Room 167
	Room 168
	Room 169
	Room 170
	Room 171
	Room 172
	Room 173
	Room 174
	Room 175
	Room 176
	Room 177
	Room 178
	Room 179
	Room 180
	Room 181
	Room 182
	Room 183
	Room 184
	Room 185
	Room 186
	Room 187
	Room 188
	Room 189
	Room 190
	Room 191
	Room 192
	Room 193
	Room 194
	Room 195
	Room 196
	Room 197
	Room 198
	Room 199
	Room 200



2nd Floor Plan





## PHOTOGRAPHS

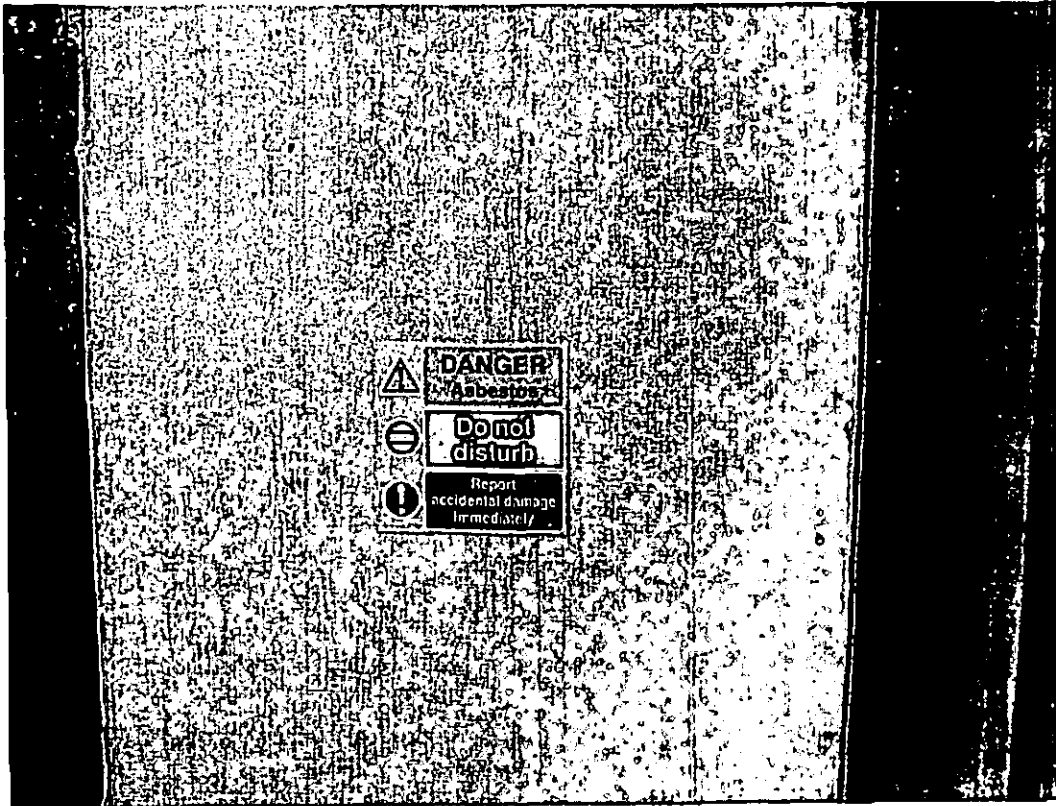


Photo 1 Ref: 01/5 . Boards to doors containing Amosite.

---

**BULK SAMPLE REPORT**

**THE BULK SAMPLE REPORT IS ATTACHED**

**2 PAGES**



# AOH Ltd

Consultants In Asbestos, Occupational Hygiene, Safety & The Environment

Registered in England Number 3972469

Registered Office: St. Paul's House, Eldon Street, Willington Quay, Tyne & Wear, NE28 6NQ.

Tel: 0191 263 5115 - Fax: 0191 263 2758



## TEST REPORT - BULK SAMPLE ANALYSIS



0673

### CONFIDENTIAL

CLIENT: Resources, Access & Diversity

ADDRESS: Leicester City Council  
16 New Walk  
Leicester  
Leicestershire  
UK

LE1 6ZG

CONTACT:

REPORT NUMBER: LEC/A1/18308/L

NO. OF SAMPLES: 6

COLLECTED BY: (AOH Ltd)

ANALYSIS DATE: 26/03/2008

SITE LOCATION: The Rowans

### REPORT DETAILS

Qualitative analysis to determine the presence and asbestos fibre type has been carried out on the sample(s) detailed on the attached page(s) as detailed in Documented In-house Method No. 1 based upon the Analysts Guide. Samples collected by A.O.H. Ltd are by In-house Method No.3 These samples were analysed at the Leicester laboratory

SIGNED BY ANALYST:

PRINT DATE: 21/05/2008

PAGE: 1 OF 2

ANALYST: BSc Hons MSc

FORM AA1 (R) Ver April 2008

AOH bear no responsibility for sample collection or information provided by Client



# AOH Ltd

F 21

Consultants In Asbestos, Occupational Hygiene, Safety & The Environment  
Registered in England Number 3972469

Registered Office: St. Paul's House, Eldon Street, Willington Quay, Tyne & Wear, NE28 6NQ.

Tel: 0191 263 5115 - Fax: 0191 263 2758

Visit our website at [www.aohconsultants.co.uk](http://www.aohconsultants.co.uk) or email us at [aohltd@stpaulshouse.fsnet.co.uk](mailto:aohltd@stpaulshouse.fsnet.co.uk)



1575

## TEST REPORT - BULK SAMPLE ANALYSIS

### CONFIDENTIAL

CLIENT :	Leicester City Council	REPORT NUMBER :	LEC/A4/9373L
ADDRESS :	Town Clerks Department New Walk Centre Welford Place Leicester LE1 6ZG	COLLECTED BY :	T. Hearn
		RECEIVED IN LAB :	14/2/02
		ANALYSIS DATE :	14/2/02
CONTACT :		NO. OF SAMPLES :	1

### REPORT DETAILS

Qualitative analysis to determine the presence and asbestos fibre type has been carried out on the sample(s) detailed below. Analysis was as detailed in Documented In-house Method No. Version 3, May 2001, using stereo microscopy, polarized light microscopy and dispersion staining.

### RESULTS

The Rowans

SAMPLE NUMBER	DETAILS	IDENTIFICATION
62148	Board To Outhouse Door	AMOSITE (Brown Asbestos)

SIGNED

ANALYST:

B.Sc (Hons) M.I.O.S.H.

REPORT DATE: 15/2/02

PAGE 1 OF 1

FORM AAI (R) Version 2.06.01

A.O.H. bear no responsibility for sample collection by client.

Area Offices: Frith House, 11 Leicester Road, Ansey, Leicester LE17 7AT. Tel: 0116 235 3660 - Fax: 0116 235 3661 - email: [sobltd@frithhouse.fsnet.co.uk](mailto:sobltd@frithhouse.fsnet.co.uk)  
88 The Highway, Hawarden, Flintshire, CH5 3DJ. Tel: 01244 533300 - email: [aeolchester@fincoc.net](mailto:aeolchester@fincoc.net)  
88 Thorsgate, Rawmarsh, Rotherham, S62 7HN. Tel: 01709 710730 - Fax: 01709 710934 - email: [aohconsul@aol.com](mailto:aohconsul@aol.com)

Directors: Ross Bainbridge B.Sc. (Hons), Dip. Occ. Hyg., F.B.L.O.H., M.I.O.A., M.I.O.S.H. - John P. Naylor B.Sc., M.Sc. (Occ. Hyg.), M.I.O.S.H.  
Neil Redfern Cert. Occ. Hyg., L.B.I.O.H. - Ian Riccahan L.R.S.C., Dip. Occ. Hyg., M.B.I.O.H. (Company Secretary)

RESULTS      FOR REPORT NUMBER: LEC/A1/18308/L

SAMPLE      DETAILS      IDENTIFICATION

The Rowans

85749	03/5: Store	Chrysotile (White Asbestos)
85750	04/5: W.C.- cistern	None Detected
85751	16/5: Kitchen- pad to sink	None Detected
85752	18/5: Cupboard under stairs- boards to wall	None Detected
85753	37/5: Annix office- board above door	None Detected
85754	51/5: Boiler house- redundant board	None Detected

SIGNED BY ANALYST:

PRINT DATE: 21/05/2008

PRINTED:

BSc Hons MSc

PAGE: 2 OF 2

FORM AA1 (R) Ver April 2008

**APPENDIX 1**

Property Name: The Rowans		Report Number: LEC/A/18308L																	
Reference Number	Location	Material Assessment						Priority Assessment										Total Assessment (5+6+10+14+17)	
		Product Type	Extent of Damage	Surface Treatment	Asbestos Type	Total Material Assessment (1+2+3+4)	Normal Occupancy Activity	Likelihood of Disturbance				Human Exposure Potential			Maintenance Activity				
								Location	Accessibility	Extent/Amount	Average of (7+8+9)	No. of Occupants	Frequency of Each Use	Average Time use	Average of (11+12+13)	Type of Maintenance	Frequency of Maintenance		Average of (15+16)
1	2	3	4	5	6	7	8	9	10	11	12	13	14	15	16	17			
01/5	Bike store. Boards to doors.	2	1	1	2	6	0	1	2	1	2	1	3	0	2	1	1	1	11

